



Kensal Road W10

Guide Price £12,000,000

6 bedroom freehold house for sale

Description

This extraordinary property offers a rare opportunity to own a truly unique home steeped in history and transformed for modern luxury living. Originally founded in 1880 as a Working Men's Club and later reopened in 1996 as a popular restaurant and bar, this iconic building has been thoughtfully redesigned into an exceptional six-bedroom residence of remarkable scale and character. Offering 10,258 sq ft of accommodation, the vast main rooms of the property have been retained and restored to create unrivalled entertainment spaces.

Spanning an impressive lateral footprint, the house boasts a spectacular 44ft triple-height reception room, a breathtaking space that perfectly showcases the building's heritage while embracing contemporary design. A stunning 44ft principal bedroom suite offers the height of indulgence, complete with twin bathrooms and a private jacuzzi.

Every detail has been meticulously modernised to an exceptional standard. The expansive fully fitted kitchen is ideal for both family life and entertaining, while a private rear garden and roof terrace overlooking the canal offer rare outdoor spaces in this central London location. With the added benefit of garage parking for three cars, this home delivers style, practicality and security.

The property is located on Kensal Road in The Royal Borough of Kensington and Chelsea, just a short walk from the vibrant and eclectic Golborne Road and the world-famous Portobello Road Market.

This extraordinary home fuses period character with state-of-the-art modernity in one of London's most desirable and well-connected boroughs. A truly one-of-a-kind property for those seeking history, space, and luxury.

Material Information

Tenure: Freehold

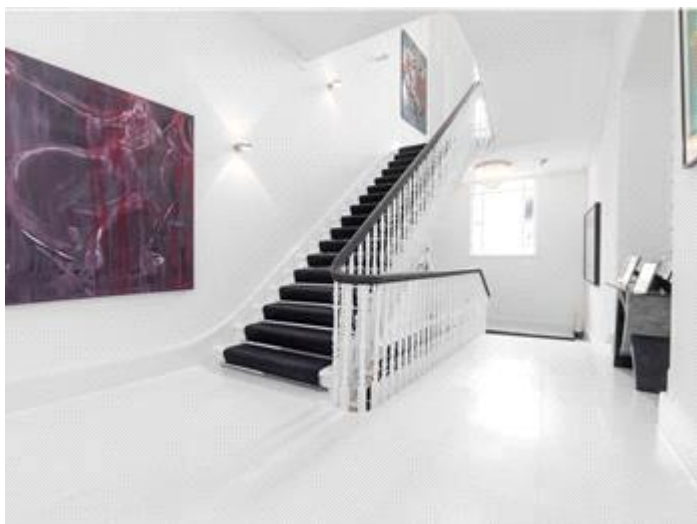


Kensal Road W10



Approximate Gross Internal Area 10258 Sq Ft - 952.99 Sq M

Measured in according with RICS guidelines. Every attempt is made to ensure accuracy
However all measurements are approximate.
The floor plan is illustrative purposes only and is not to scale



Viewing by appointment only
Milton Stone - Head Office
53 Abingdon Road, London W8 6AN
Tel: 0207 938 2311 Email: sm@miltonstone.com Website: <http://www.miltonstone.com>

MILTON
STONE