





# Yeomans Row, London SW3

£1,950 pw

3 bedroom house to rent

## Description

A stunning terraced house set over three floors providing contemporary living in this fabulous Knightsbridge location.

Featuring a bright and spacious reception room, large kitchen and separate dining room, two double bedrooms with en-suite bathrooms, a further bedroom and a roof terrace.

Yeomans Row is located to the south of the Brompton Road within walking distance of Harrods. The closest tube stations are Knightsbridge (Piccadilly Line) and South Kensington tube station (Piccadilly, District and Circle Lines).

Deposit: £11,700

Holding Deposit: £3,900

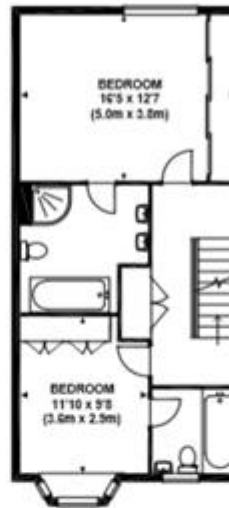


## YEOMANS ROW, SW3

Approx. gross internal area  
1954 Sq Ft. / 181.7 Sq M.



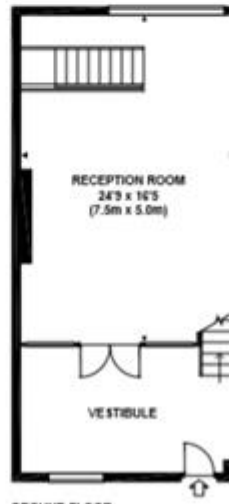
SECOND FLOOR



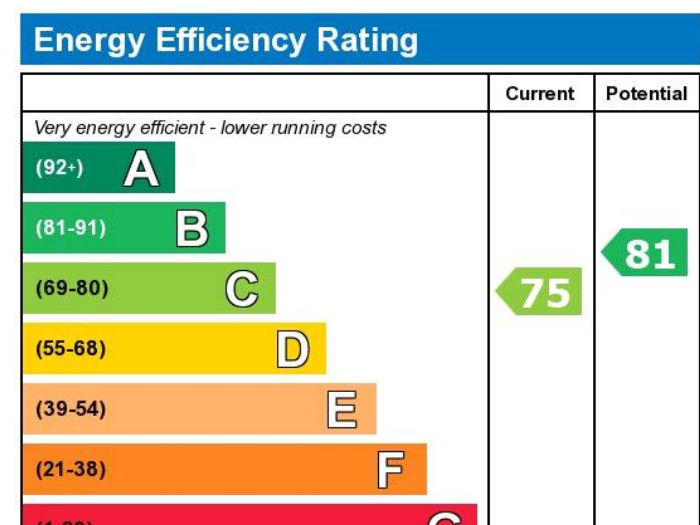
FIRST FLOOR



LOWER GROUND FLOOR



GROUND FLOOR



Viewing by appointment only  
Milton Stone - Head Office  
53 Abingdon Road, London W8 6AN  
Tel: 0207 938 2311 Email: [sm@miltonstone.com](mailto:sm@miltonstone.com) Website: <http://www.miltonstone.com>