



# Penywern Road, London

£475 pw

1 bedroom apartment to rent

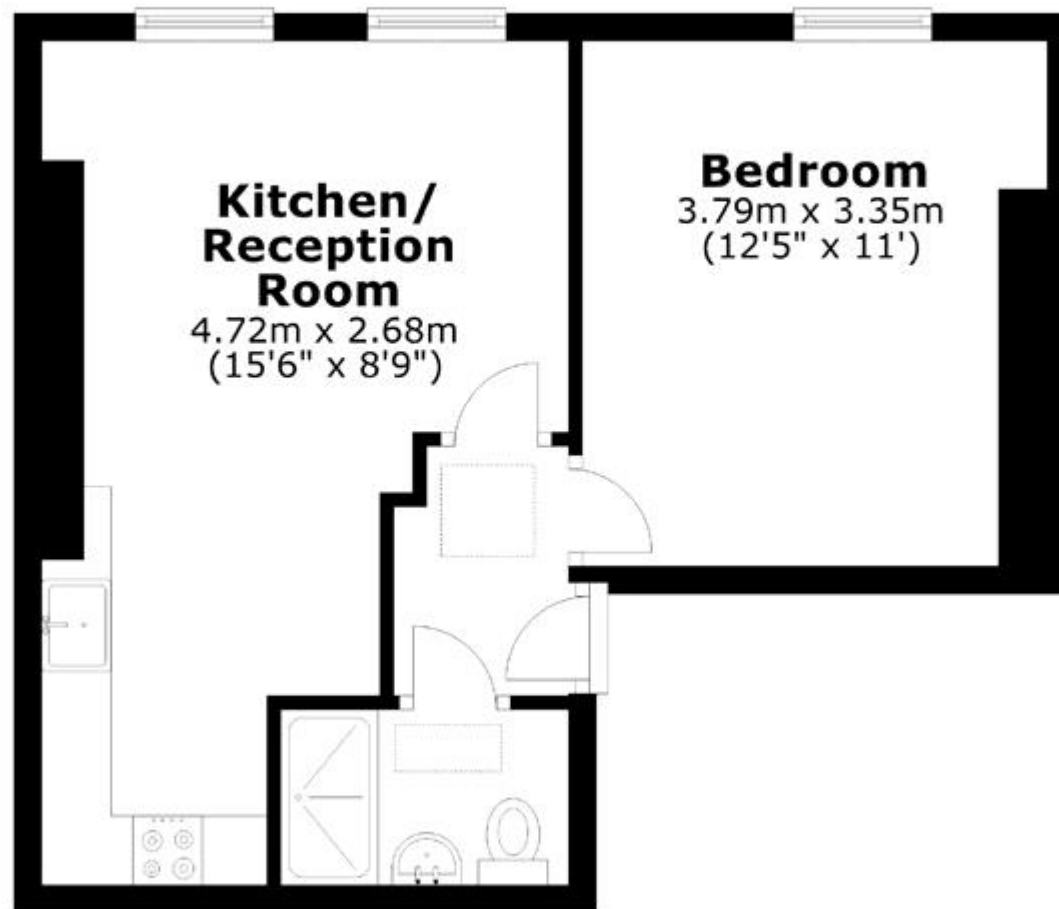
## Description

A bright, well-proportioned, and beautifully presented one-bedroom apartment on the top floor of this stucco fronted period building. Ideally located within moments of Earls Court Underground station, and close to the fashionable restaurants and boutiques of the Old Brompton Road, this apartment has been beautifully refurbished and furnished, and benefits from one double bedroom, a lovely reception room with rooftop views and a southerly aspect.

Deposit: £2,375

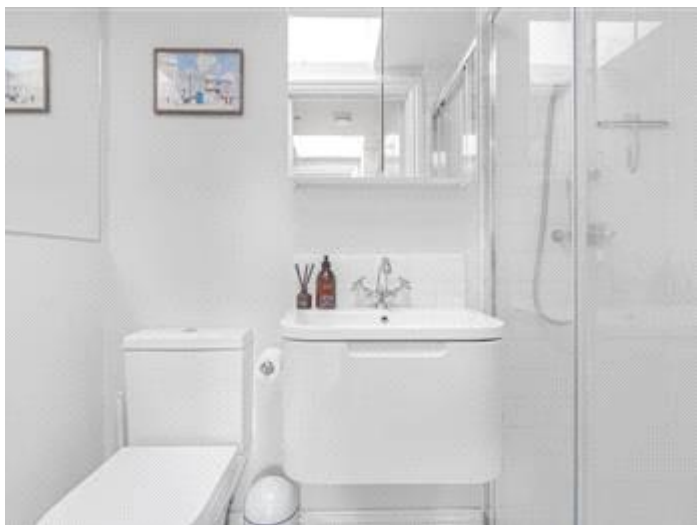
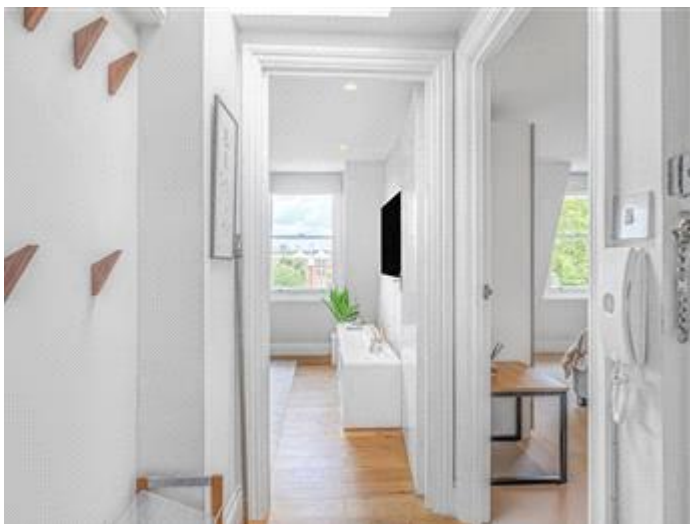
Holding Deposit: £475





Total area: approx. 35.9 sq. metres (386.2 sq. feet)





Energy Efficiency Rating		
	Current	Potential
Very energy efficient - lower running costs		
(92+) <b>A</b>		
(81-91) <b>B</b>		
(69-80) <b>C</b>		
(55-68) <b>D</b>	66	77
(39-54) <b>E</b>		
(21-38) <b>F</b>		
(1-20) <b>G</b>		

Viewing by appointment only  
Milton Stone - Head Office  
53 Abingdon Road, London W8 6AN  
Tel: 0207 938 2311 Email: [sm@miltonstone.com](mailto:sm@miltonstone.com) Website: <http://www.miltonstone.com>