



Quastel House SE1

£775,000

2 bedroom flat for sale

Description

A well presented two bedroom apartment with two private balconies of approximately 1000 sqft, (93sqm) situated on the second floor of this small purpose built building within a few minutes walk of Borough underground station, The Shard and Borough Market.

- 2 Bedrooms
- Bathroom
- Shower room En-suite
- Reception
- Kitchen
- Lift
- 2 Balconies
- EPC Rating B
- Long Leasehold

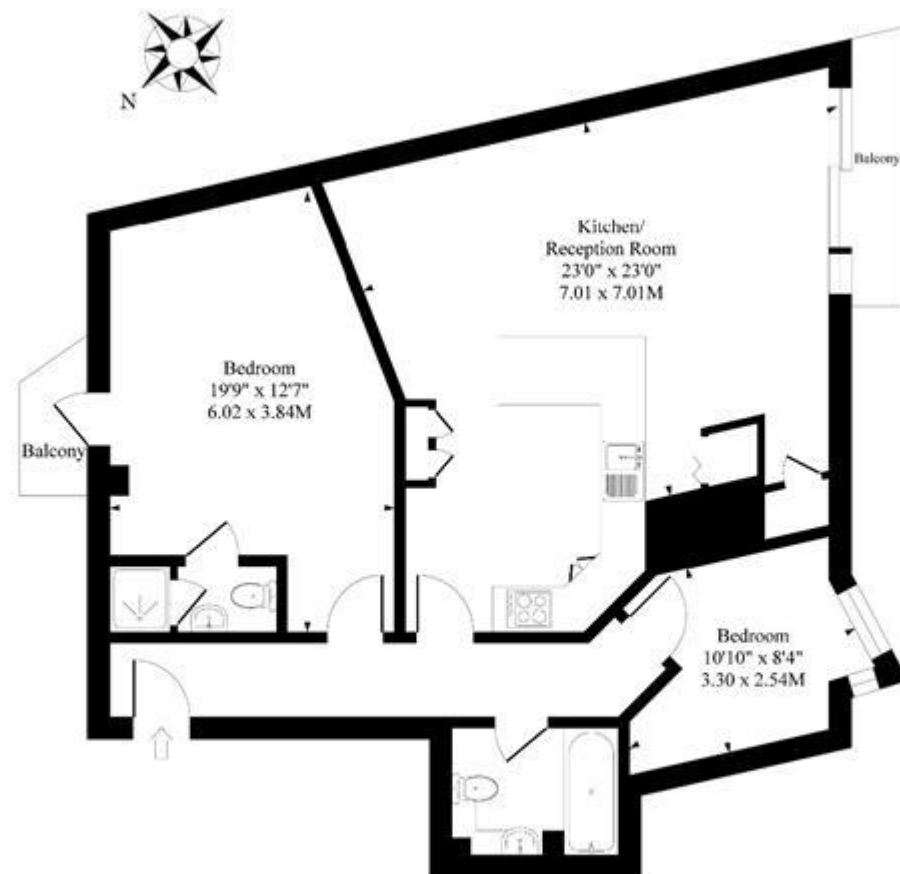
Ground Rent £300 until 25/12/25 then doubling every 25 years thereafter. Service Charge £3,982.10 which includes a sinking fund of £1190.90 payable half yearly.

Material Information

Tenure: Leasehold (100 years)



Quastel House, 32 Long Lane, Borough, London, SE1



First Floor

Approximate Gross Internal Area 1002 Sq Ft - 93.08 Sq M

Measured in according with RICS guidelines. Every attempt is made to ensure accuracy
However all measurements are approximate.
The floor plan is illustrative purposes only and is not to scale



Energy Efficiency Rating

	Current	Potential
Very energy efficient - lower running costs		
(92+) A		
(81-91) B	82	84
(69-80) C		
(55-68) D		
(39-54) E		
(21-38) F		
(4-20) G		

Viewing by appointment only

Milton Stone - Head Office

53 Abingdon Road, London W8 6AN

Tel: 0207 938 2311 Email: sm@miltonstone.com Website: <http://www.miltonstone.com>

**MILTON
STONE**