



MILTON
STONE

Harrington Gardens, London

£1,450,000

2 bedroom flat for sale

Description

First time on the market in nearly 15 years this Raised Ground and Lower Ground Floor maisonette offers virtually 1000 sq ft of accommodation with it's own private front door.

The property affords wooden floors throughout, two double bedrooms, two bathrooms and a separate guest cloakroom as well as a sizable south facing reception room and a well equipped kitchen and access to a patio garden.

Harrington Gardens runs west of Gloucester Road and is therefore close to both Stratford Village in Kensington, W8 and South Kensington, SW7 alike with their array of excellent shops, restaurants and transport facilities.

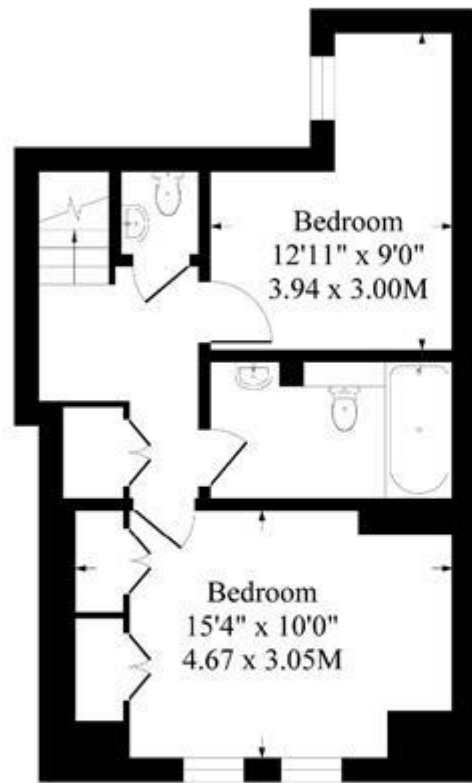
Material Information

Tenure: Share of Freehold (999 years)

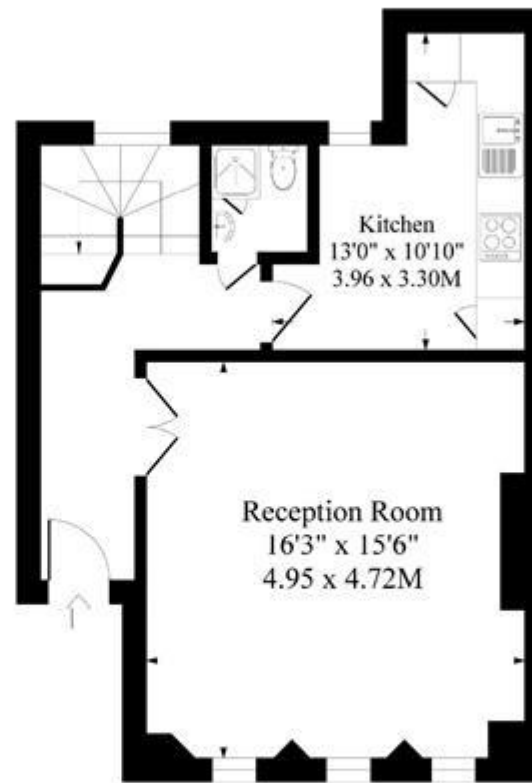
Service Charge: £4,500 per year



Harrington Gardens SW7



Lower Ground Floor



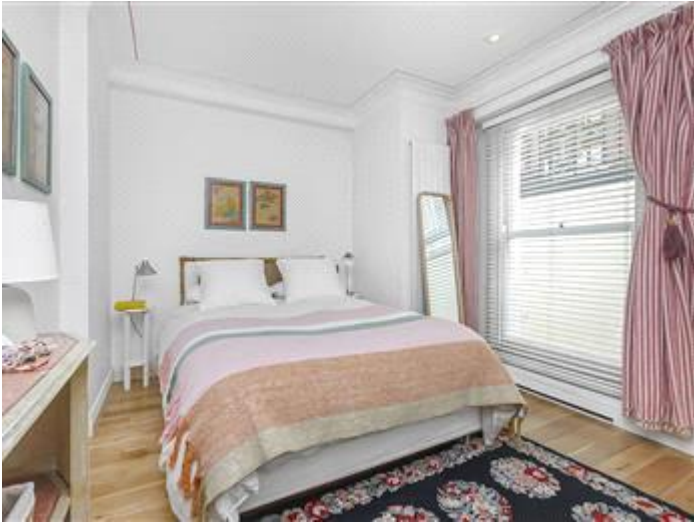
Upper Ground Floor



Approximate Gross Internal Area

983 Sq Ft - 91.32 Sq M

Measured in accordance with RICS guidelines. Every attempt is made to ensure accuracy
However all measurements are approximate.
The floor plan is illustrative purposes only and is not to scale



Viewing by appointment only
Milton Stone - Head Office
53 Abingdon Road, London W8 6AN
Tel: 0207 938 2311 Email: lh@miltonstone.com Website: <http://www.miltonstone.com>