



Yeomans Row, London SW3

£1,500 pw

3 bedroom house to rent

Description

A stunning terraced house set over three floors providing contemporary living in this fabulous Knightsbridge location.

Featuring a bright and spacious open plan reception room, large kitchen/dining room, two double bedrooms with en-suite bathrooms, a further bedroom and a roof terrace.

Yeomans Row is located to the south of the Brompton Road within walking distance of Harrods. The closest tube stations are Knightsbridge (Piccadilly Line) and South Kensington tube station (Piccadilly, District and Circle Lines).

Deposit: £9,000

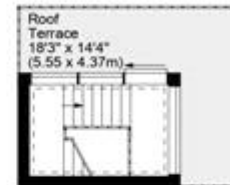
Holding Deposit: £1,500



Yeomans Row, SW3



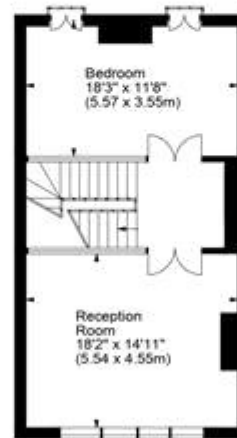
Approx. Gross Internal Area
2020 Sq Ft - 187.66 Sq M



Third Floor



Ground Floor



First Floor



Second Floor

For illustration purposes only. Not to scale.
All measurements are taken and shown at floor level.
www.r3photography.co.uk © Photography / Floor Plans / Lease Plans / EPCs





Energy Efficiency Rating		
	Current	Potential
Very energy efficient - lower running costs		
(92-100) A		
(81-91) B		
(69-80) C		74
(55-68) D	63	
(39-54) E		
(21-38) F		
(1-20) G		

Viewing by appointment only
Milton Stone - Head Office
53 Abingdon Road, London W8 6AN
Tel: 0207 938 2311 Email: lh@miltonstone.com Website: <http://www.miltonstone.com>

