



MILTON
STONE

Yeomans Row, London SW3

£1,600 pw

3 bedroom house to rent

Description

A stunning terraced house set over three floors providing contemporary living in this fabulous Knightsbridge location.

Featuring a bright and spacious open plan reception room, large kitchen/dining room, two double bedrooms with en-suite bathrooms, a further bedroom and a roof terrace.

Yeomans Row is located to the south of the Brompton Road within walking distance of Harrods. The closest tube stations are Knightsbridge (Piccadilly Line) and South Kensington tube station (Piccadilly, District and Circle Lines).

Deposit: £9,600

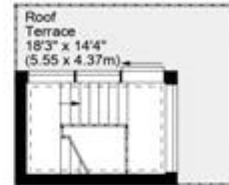
Holding Deposit: £1,600



Yeomans Row, SW3



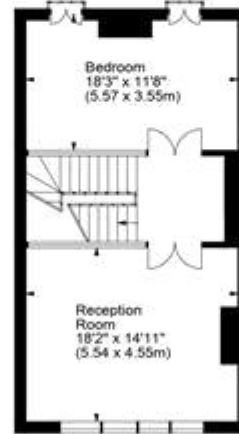
Approx. Gross Internal Area
2020 Sq Ft - 187.66 Sq M



Third Floor



Ground Floor



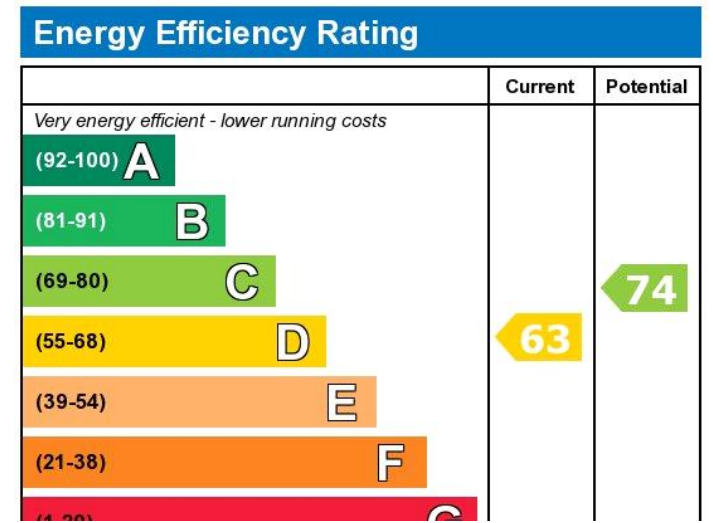
First Floor



Second Floor

For illustration purposes only. Not to scale.
All measurements are taken and shown at floor level.
www.r3photography.co.uk © Photography / Floor Plans / Lease Plans / EPCs





Viewing by appointment only
 Milton Stone - Head Office
 53 Abingdon Road, London W8 6AN
 Tel: 0207 938 2311 Email: sm@miltonstone.com Website: <http://www.miltonstone.com>