



MILTON  
STONE

# Weymouth Mews, London W1G

£695 pw

1 bedroom flat to rent

## Description

A good size 1 bedroom flat (approx 576 sq ft / 54 sq m) on the top floor (2nd) in this converted mews property in the heart of Marylebone, close to the High Street & Oxford Street. The closest tubes are Oxford Circus (Bakerloo, Central, Victoria lines) & Regent's Park (Bakerloo line).

The flat comprises of a reception room with wood flooring, open plan kitchen with breakfast bar (appliances comprise of a tall fridge/freezer, washing machine, oven and 4-ring electric hob), store room cupboard housing boiler and extra storage for suitcases etc, double bedroom and family bathroom.

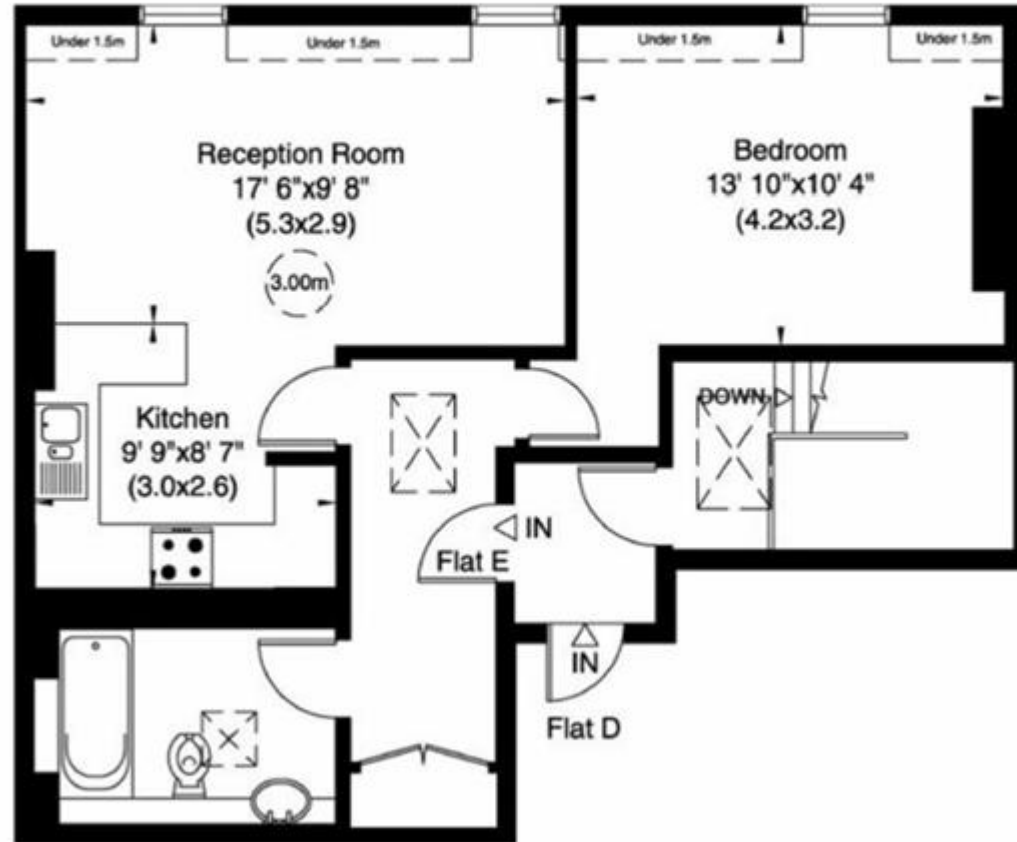
Available furnished/unfurnished from 16th December.  
Video available upon request.

Westminster Council Tax - Band F - £1,405.67pa (25% discount available for single occupancy)

Deposit: £3,475  
Holding Deposit: £695



Flat E  
Gross internal area (approx.)  
54 Sq m (576 Sq ft) Including Under 1.5m



Second Floor



Energy Efficiency Rating		
	Current	Potential
Very energy efficient - lower running costs		
(92-100) <b>A</b>		
(81-91) <b>B</b>		
(69-80) <b>C</b>		<b>75</b>
(55-68) <b>D</b>	<b>60</b>	
(39-54) <b>E</b>		
(21-38) <b>F</b>		
(1-20) <b>G</b>		

Viewing by appointment only  
 Milton Stone - Head Office  
 53 Abingdon Road, London W8 6AN  
 Tel: 0207 938 2311 Email: [lh@miltonstone.com](mailto:lh@miltonstone.com) Website: <http://www.miltonstone.com>