



MILTON
STONE

Regent Crescent, London W1B

£1,250 pw

1 bedroom flat to rent

Description

A unique & modern 1 bedroom lower ground floor flat (approx 731 sq ft / 67.91 sq m) located in a Prime Central London location with a 5-min walk from Regent's Park Underground Station (Bakerloo line) and a short distance to some of London's finest restaurants.

The property has been interior designed to a high standard and comprises of a reception room with open plan luxury kitchen (with a tall fridge/freezer, dishwasher, wine cooler, oven & electric hob), double bedroom with fitted wardrobes and modern en-suite bathroom with bath tub & separate shower cubicle, guest WC and large utility room housing washing machine & tumble dryer.

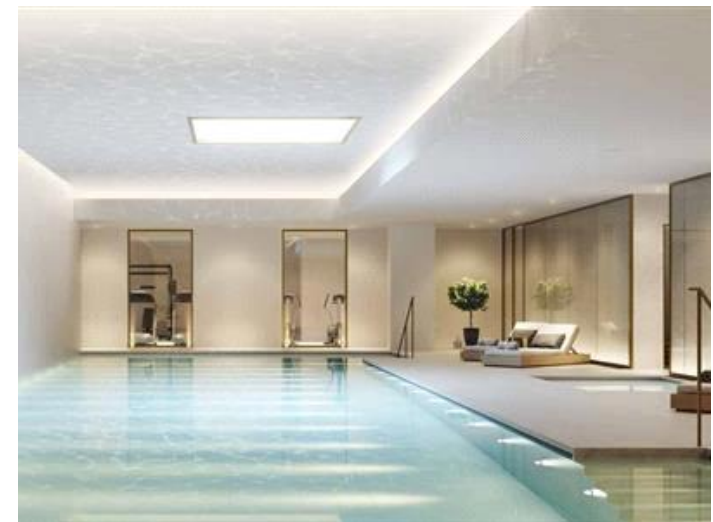
Further benefits include wood flooring throughout, air-con, 24hr concierge, full leisure facilities including swimming pool, gym, yoga/Pilates studio, steam/sauna, treatment rooms, cinema, business lounge, lift, communal gardens and Park Square Gardens at the front of the development.

Available now furnished/unfurnished

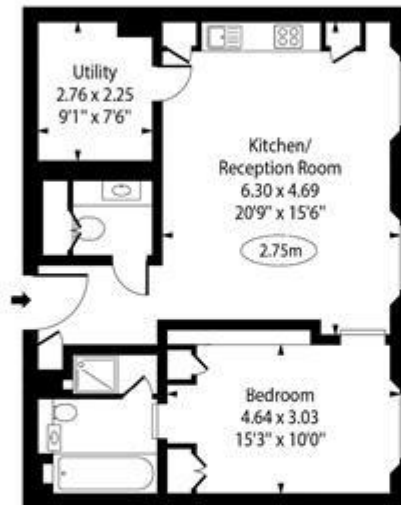
Westminster Council tax - Band F - £1,405.67pa (25% discount available for single occupancy) ECP - B

Deposit: £7,500

Holding Deposit: £1,250



Park Crescent, W1B

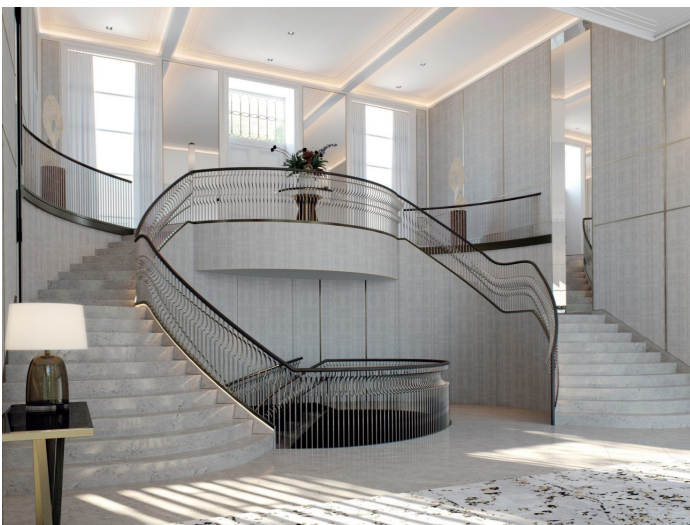


Lower Ground Floor

Approx Gross Internal Area 731 Sq Ft - 67.91 Sq M

For Illustration Purposes Only - Not To Scale Floor Plan by www.nogaphotostudio.com Ref: No.50841

This floor plan should be used as a general outline for guidance only. Any intending purchaser or lessee should satisfy themselves by inspection, searches, enquiries and full survey as to the correctness of each statement. Any areas, measurements or distances quoted are approximate and should not be used to value a property or be the basis of any sale or let.



Energy Efficiency Rating		
	Current	Potential
Very energy efficient - lower running costs		
(92-100) A		
(81-91) B	84	84
(69-80) C		
(55-68) D		
(39-54) E		
(21-38) F		
(1-20) G		

Viewing by appointment only
Milton Stone - Head Office
53 Abingdon Road, London W8 6AN
Tel: 0207 938 2311 Email: lh@miltonstone.com Website: <http://www.miltonstone.com>