



MILTON
STONE

Kings Court South, Chelsea Manor Gardens, London

£690,000

1 bedroom flat for sale

Description

A spacious and well-proportioned ground floor one-bedroom apartment, located in this popular portered mansion block in the heart of Chelsea.

The apartment features a 25 ft reception room with direct access to the communal garden via a demised private patio area, a modern kitchen, a spacious double bedroom with en-suite bathroom and a guest cloakroom.

Kings Court South is a beautifully maintained building located moments from the extensive amenities of King's Road, a short walk from Sloane Square underground station (District and Circle Line).

Leasehold plus Share of Freehold

Lease length approx. 982 yrs

Expires 18/03/3007

Material Information

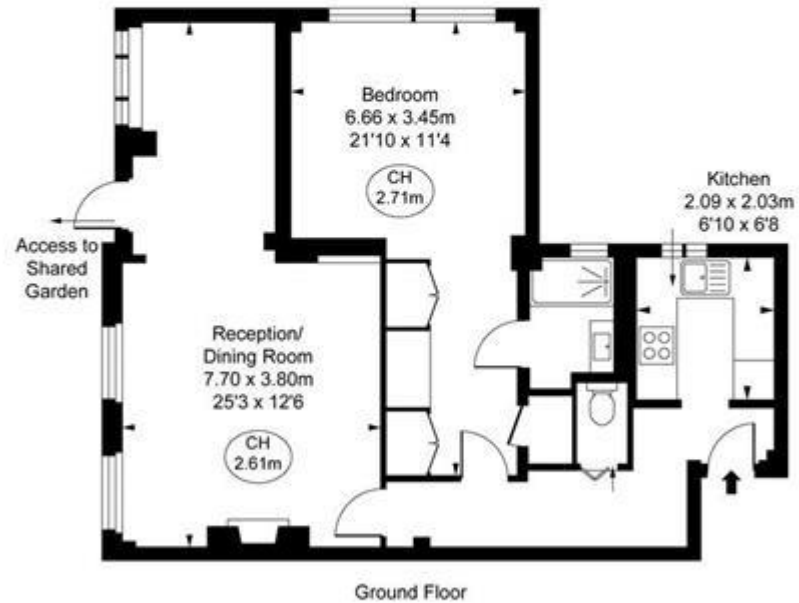
Tenure: Leasehold (982 years)
Service Charge: £7,700 per year
Plus Share of Freehold



Kings Court South, SW3

Approximate Gross Internal Area
58.91 sq m / 634 sq ft

(CH = Ceiling Heights)



This plan is not to scale. It is for guidance and not for valuation purposes.
All measurements and areas are approximate only, and have been prepared in accordance with the current edition of the RICS Code of Measuring Practice.
© Fulham Performance



Energy Efficiency Rating		
	Current	Potential
Very energy efficient - lower running costs		
(92-100) A		
(81-91) B		
(69-80) C		74
(55-68) D		
(39-54) E	52	
(21-38) F		
(1-20) G		

Viewing by appointment only
 Milton Stone - Head Office
 53 Abingdon Road, London W8 6AN
 Tel: 0207 938 2311 Email: sm@miltonstone.com Website: <http://www.miltonstone.com>