



MILTON  
STONE

# Ladbroke Grove, W10

£775,000

2 bedroom apartment for sale

## Description

A charming, bright, and beautifully presented apartment on the third floor of this attractive period building located in this highly sought-after location. The flat features a fabulous west facing reception room and a mezzanine TV room. The property is moments from the eclectic bars, restaurants and shops of Portobello Road and Golborne Road, Ladbroke Grove underground station is also a short walk away (Circle and Hammersmith & City lines)

Leasehold, 95 years remaining plus Share of Freehold

## Tenure

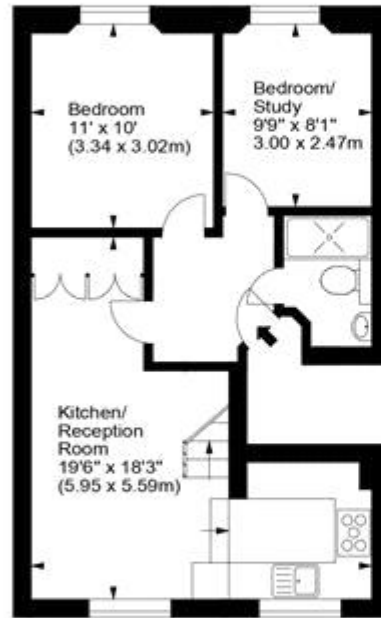
Share of Freehold



Ladbroke Grove, W10



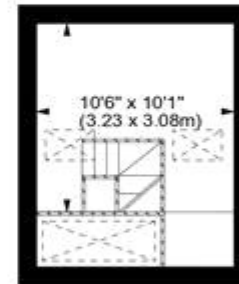
Approx. Gross Internal Area  
647 Sq Ft - 60.11 Sq M



Bedroom  
11' x 10'  
(3.34 x 3.02m)

Bedroom/  
Study  
9'9" x 8'1"  
3.00 x 2.47m

Kitchen/  
Reception  
Room  
19'6" x 18'3"  
(5.95 x 5.59m)



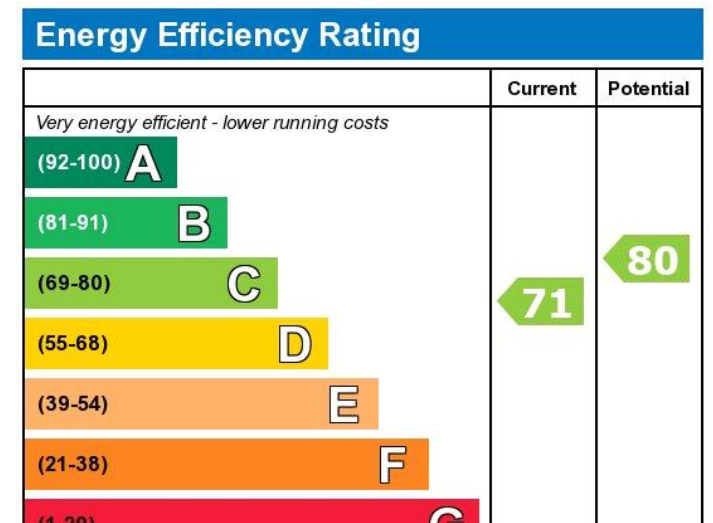
Mezzanine

Third Floor

For illustration purposes only. Not to scale.  
All measurements are taken and shown at floor level.  
[www.r3photography.co.uk](http://www.r3photography.co.uk) © Photography / Floor Plans / Lease Plans / EPCs







Viewing by appointment only  
 Milton Stone - Head Office  
 53 Abingdon Road, London W8 6AN  
 Tel: 0207 938 2311 Email: [sophie@miltonstone.com](mailto:sophie@miltonstone.com) Website: <http://www.miltonstone.com>