



MILTON
STONE

Rosary Gardens, SW7

£650,000 Leasehold

1 bedroom flat for sale

Description

A large one bedroom flat on the Lower Ground Floor of a red brick period property on Rosary Gardens. The flat is an ideal pied a terre in this Central London location, just North of the Old Brompton Road and close to both Gloucester Road and South Kensington Underground Stations.

Own street entrance : 18x17 ft Reception room : Kitchen : 11x9'8"
Double Bedroom : En suite Shower room.

Council Tax Band: E (The Royal Borough of Kensington and Chelsea)

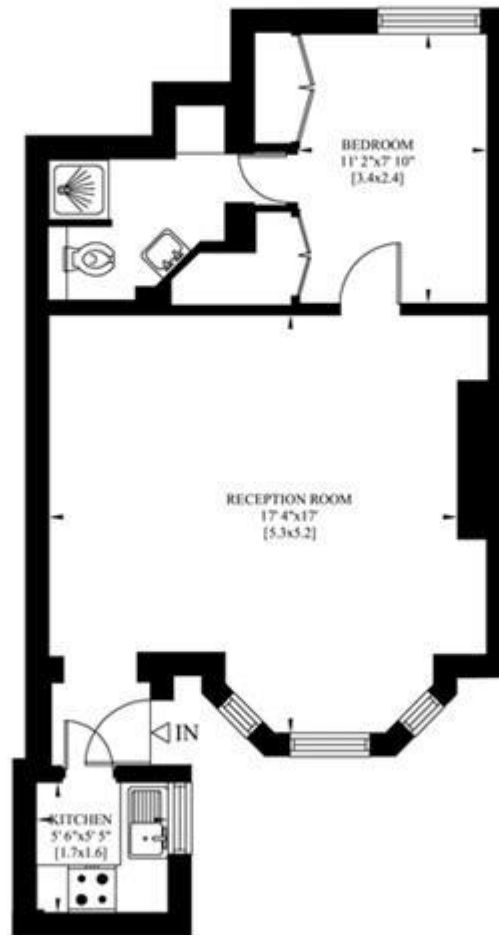
Tenure: Leasehold (87 years)

Tenure

Leasehold (87 years)



Gross Internal Area: 47 Sq. metres
507 Sq. feet



LOWER GROUND FLOOR



Energy Efficiency Rating		
	Current	Potential
Very energy efficient - lower running costs		
(92-100) A		
(81-91) B		
(69-80) C		80
(55-68) D	65	
(39-54) E		
(21-38) F		
(1-20) G		

Viewing by appointment only
 Milton Stone - Head Office
 53 Abingdon Road, London W8 6AN
 Tel: 0207 938 2311 Email: info@miltonstone.com Website: www.miltonstone.com

