



MILTON
STONE

Harrington Gardens, London

£1,295,000 Leasehold

2 bedroom apartment for sale

Description

A beautifully refurbished and well-proportioned two bedroom, two bathroom split-level apartment with high ceilings in this period building on Harrington Gardens. This bright and spacious apartment (833 sq ft) with period features is a short walk from the shops and restaurants of Gloucester Road and South Kensington and the extensive transport links via Gloucester Road underground station.

Tenure: Leasehold (107 years)

Tenure

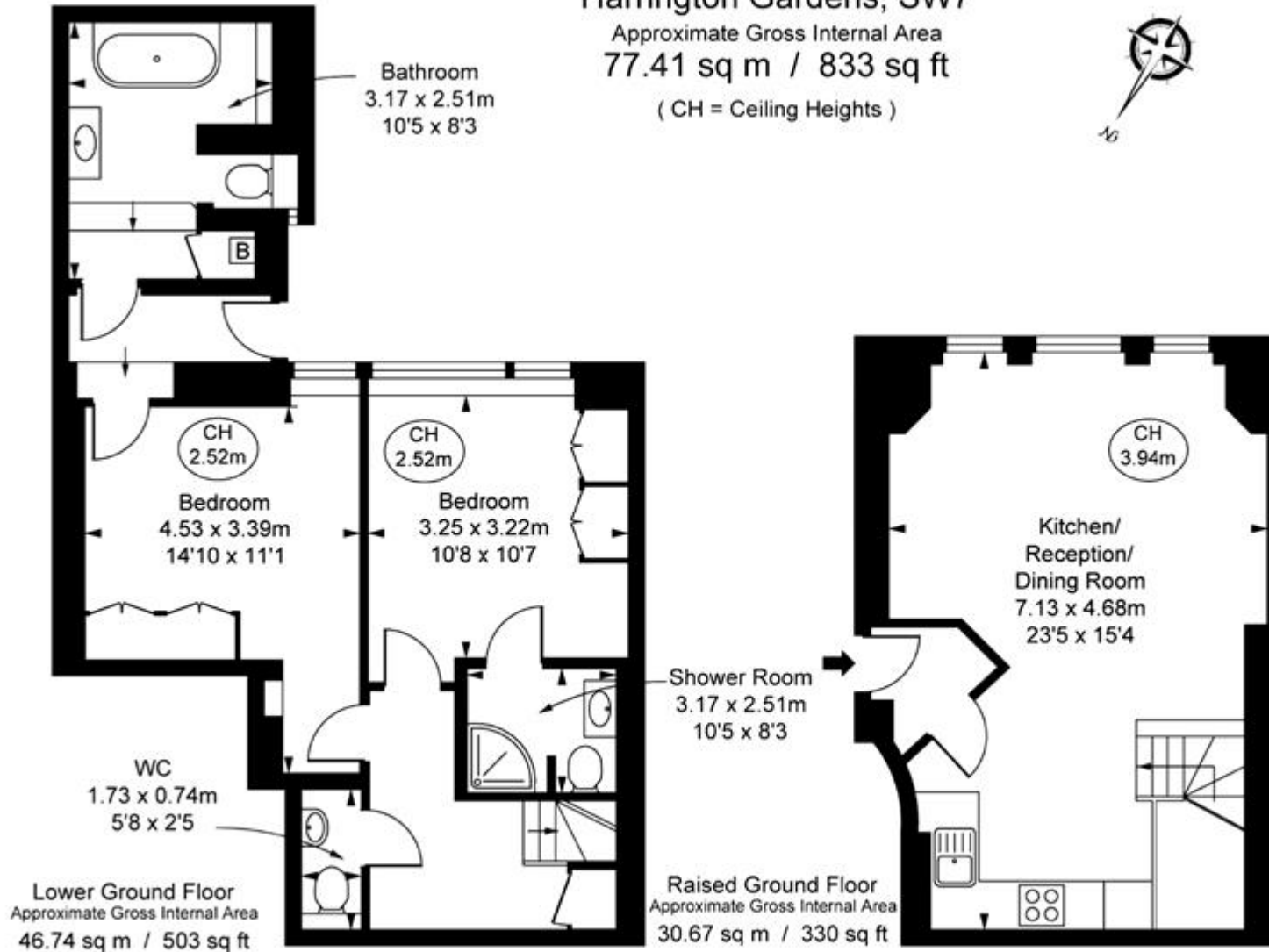
Leasehold (107 years)



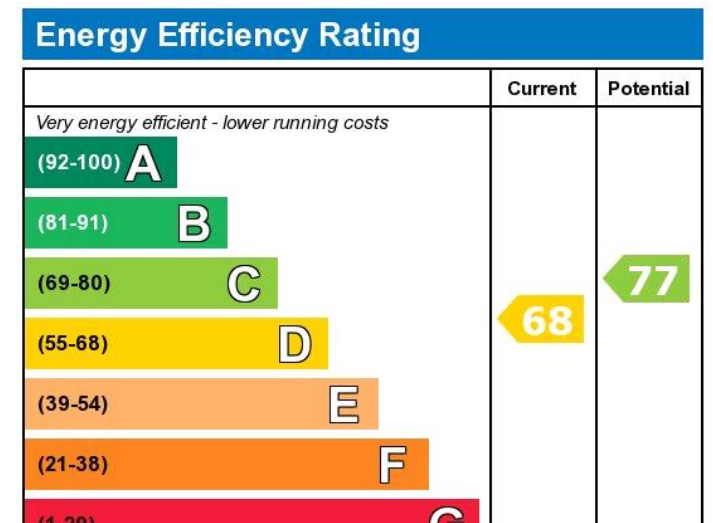
Harrington Gardens, SW7

Approximate Gross Internal Area
77.41 sq m / 833 sq ft

(CH = Ceiling Heights)



This plan is not to scale. It is for guidance and not for valuation purposes.
All measurements and areas are approximate only, and have been prepared in accordance with the current edition of the RICS Code of Measuring Practice.
© Fulham Performance



Viewing by appointment only
 Milton Stone - Head Office
 53 Abingdon Road, London W8 6AN
 Tel: 0207 938 2311 Email: info@miltonstone.com Website: www.miltonstone.com

