



Cranley Gardens, London, SW7

£495,000 Leasehold

Studio for sale

Description

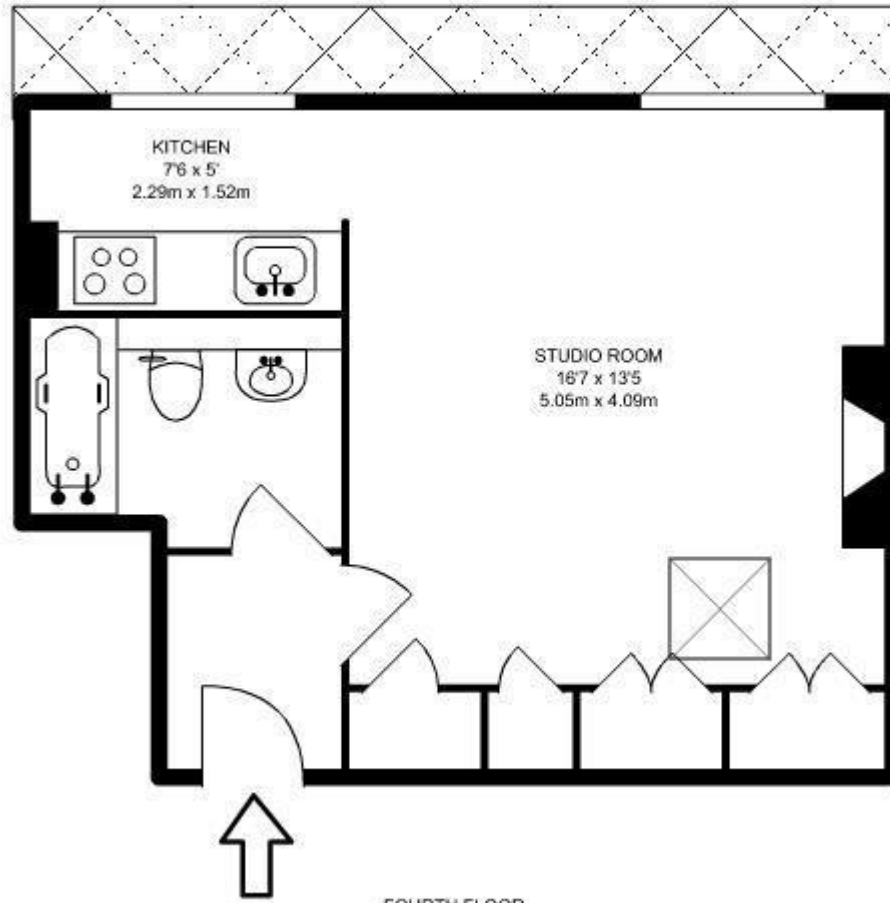
A bright studio room on the fourth floor (walk up) closely located to the amenities of South Kensington and the Fulham Road.

Tenure: Leasehold

Tenure

Leasehold





KITCHEN
7'6" x 5'
2.29m x 1.52m

STUDIO ROOM
16'7" x 13'5"
5.05m x 4.09m

↑
FOURTH FLOOR
331 SQ FT/30.73 SQ M



Energy Efficiency Rating

	Current	Potential
<i>Very energy efficient - lower running costs</i>		
(92-100) A		
(81-91) B		
(69-80) C		
(55-68) D	56	60
(39-54) E		
(21-38) F		
(1-20) G		

Viewing by appointment only
 Milton Stone - Head Office
 53 Abingdon Road, London W8 6AN
 Tel: 0207 938 2311 Email: info@miltonstone.com Website: www.miltonstone.com