



MILTON  
STONE

# Chelsea Crescent

£3,650,000 Leasehold

3 bedroom apartment for sale

## Description

A stunning and unique 3 bedroom penthouse with a fabulous aspect over the River Thames towards the city skyline. This spectacular apartment has two large reception rooms, both with French doors leading out to large terraces overlooking the river. The main bedroom suite also has a private terrace, and the apartment benefits from two underground parking spaces and 7 day portorage.

Council Tax Band: H

Tenure: Leasehold (88 years)

## Tenure

Leasehold (88 years)

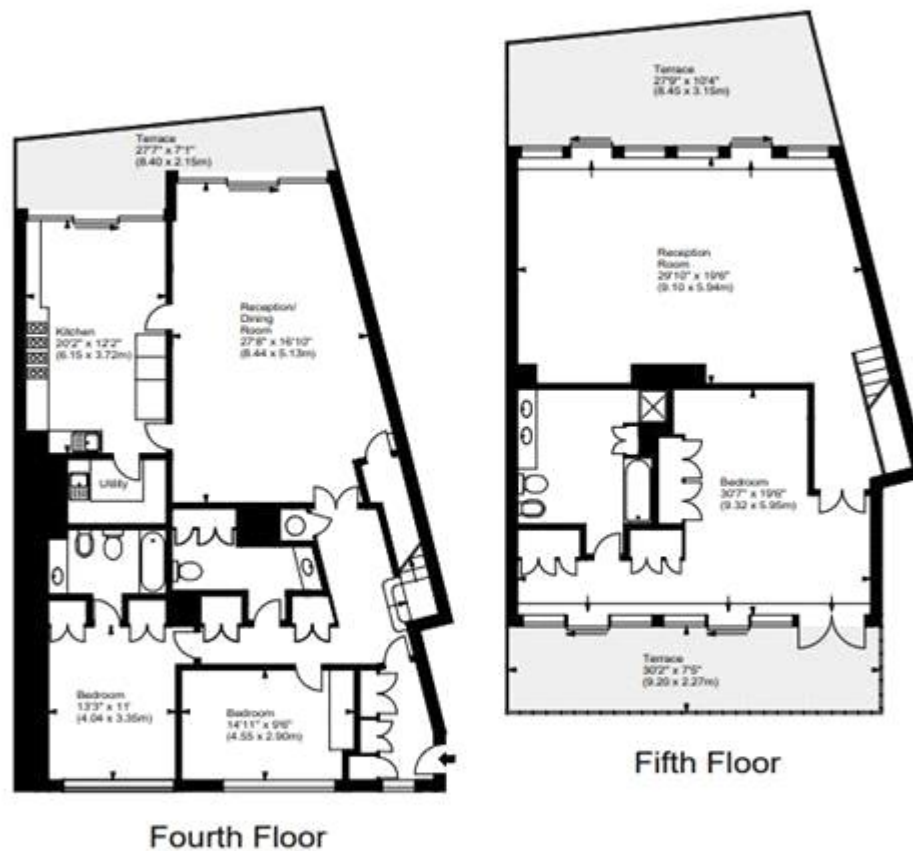




# Chelsea Crescent, SW10

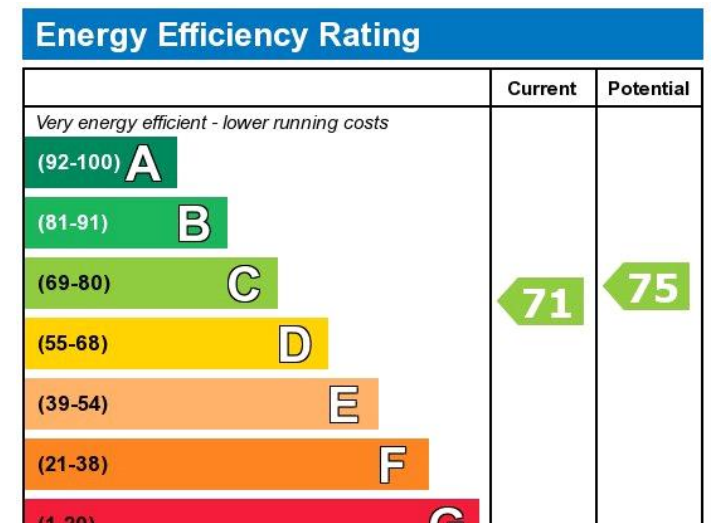


Approx. Gross Internal Area  
2753 Sq Ft - 255.76 Sq M  
Approx. Gross Terrace Area  
432 Sq Ft - 40.13 Sq M  
Approx. Gross Total Area  
3185 Sq Ft - 295.89 Sq M



For illustration purposes only. Not to scale.  
All measurements are taken and shown at floor level.  
www.r3photography.co.uk © Photography / Floor Plans / Lease Plans / EPCs





Viewing by appointment only  
 Milton Stone - Head Office  
 53 Abingdon Road, London W8 6AN  
 Tel: 0207 938 2311 Email: [info@miltonstone.com](mailto:info@miltonstone.com) Website: [www.miltonstone.com](http://www.miltonstone.com)