



# St. Helens Gardens

£475,000 Leasehold

1 bedroom flat for sale

## Description

A bright and well-proportioned one bedroom flat in this small modern block with local shops, cafes and lovely public gardens moments away. The accommodation features an open-plan kitchen/reception room, a double bedroom with built-in storage and has wood flooring throughout. The many amenities of Ladbroke Grove are close by, and Latimer Road Underground Station (Circle, Hammersmith and City Lines) is just a few minutes' walk away.

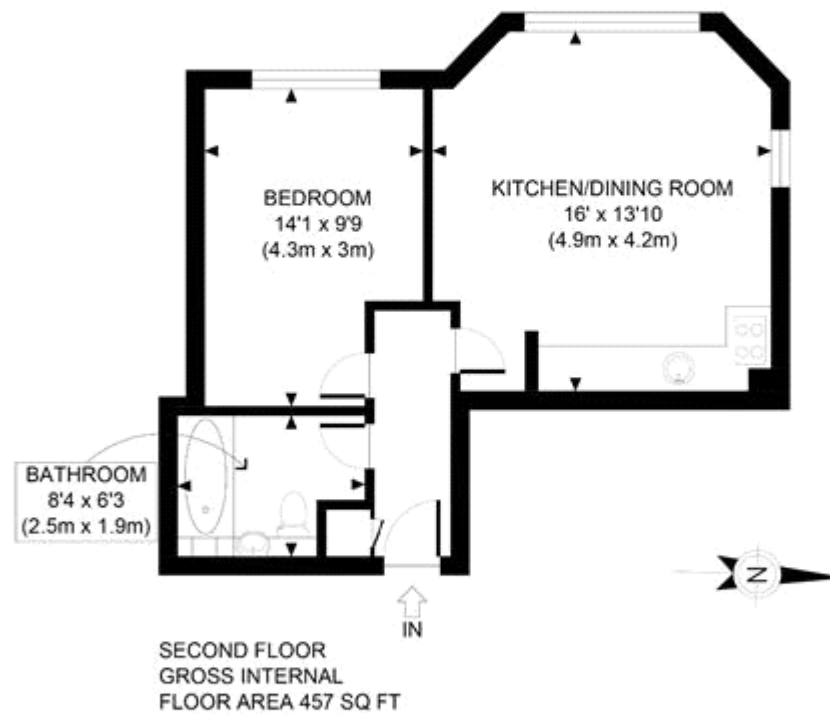
Tenure: Leasehold


Leasehold expires on the 8th of August 2127.

## Tenure

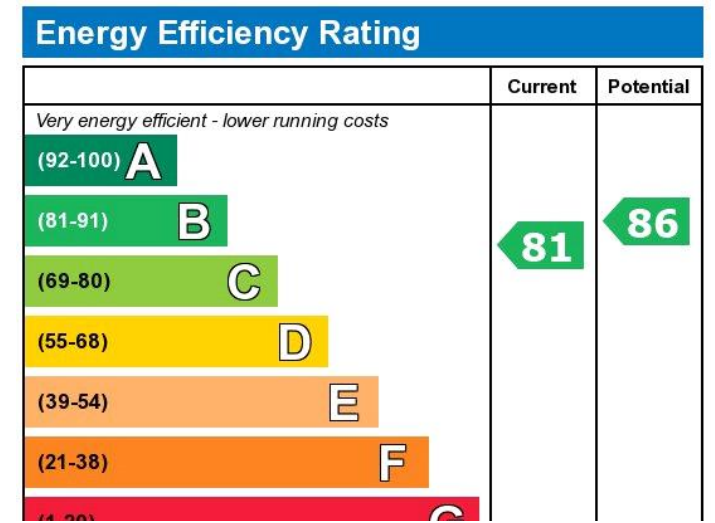
Leasehold





APPROX. GROSS INTERNAL FLOOR AREA 457 SQ FT / 42 SQM		Helens GDNS
Disclaimer: Floor plan measurements are approximate and are for illustrative purposes only. While we do not doubt the floor plan accuracy and completeness, you or your advisors should conduct a careful, independent investigation of the property in respect of monetary valuation		date 02/02/21
		photoplan 





Viewing by appointment only  
 Milton Stone - Head Office  
 53 Abingdon Road, London W8 6AN  
 Tel: 0207 938 2311 Email: info@miltonstone.com Website: www.miltonstone.com