



MILTON  
STONE

# Chelsea Harbour, London, SW10

£1,399,750 Leasehold

2 bedroom apartment for sale

## Description

An exceptionally bright south facing fourth floor, two double bedroom apartment which has been interior designed throughout. The apartment offers excellent entertaining space and a South Facing balcony with glimpses of the river.

The apartment is set within this renowned P&O development on the north bank of the River Thames.

The Chelsea Harbour development offers unique tranquility for their residents, with a marina, a 5 Star Hotel with wonderful facilities including a spa with an indoor swimming pool.

Transport facilities include Imperial Wharf mainline station, which offers direct links to Clapham Junction, Shepherds Bush and West Brompton. River busses offer peak time transport to Putney and Blackfriars Millennium Pier and a Taxi rank.

25ft Double reception with wooden floors and sliding doors to a south facing balcony with glimpses of the River Thames: Fully fitted Kitchen including a wine cooler: Master Bedroom with en-suite Bathroom : Second Double Bedroom : Shower room : Air conditioning : Lift : Video entry phone system : Underground Parking : Porterage : 24hr On Site Security.



MILTON  
STONE

Council Tax Band: H (The Royal Borough of Kensington and Chelsea)

Tenure: Leasehold (99 years)

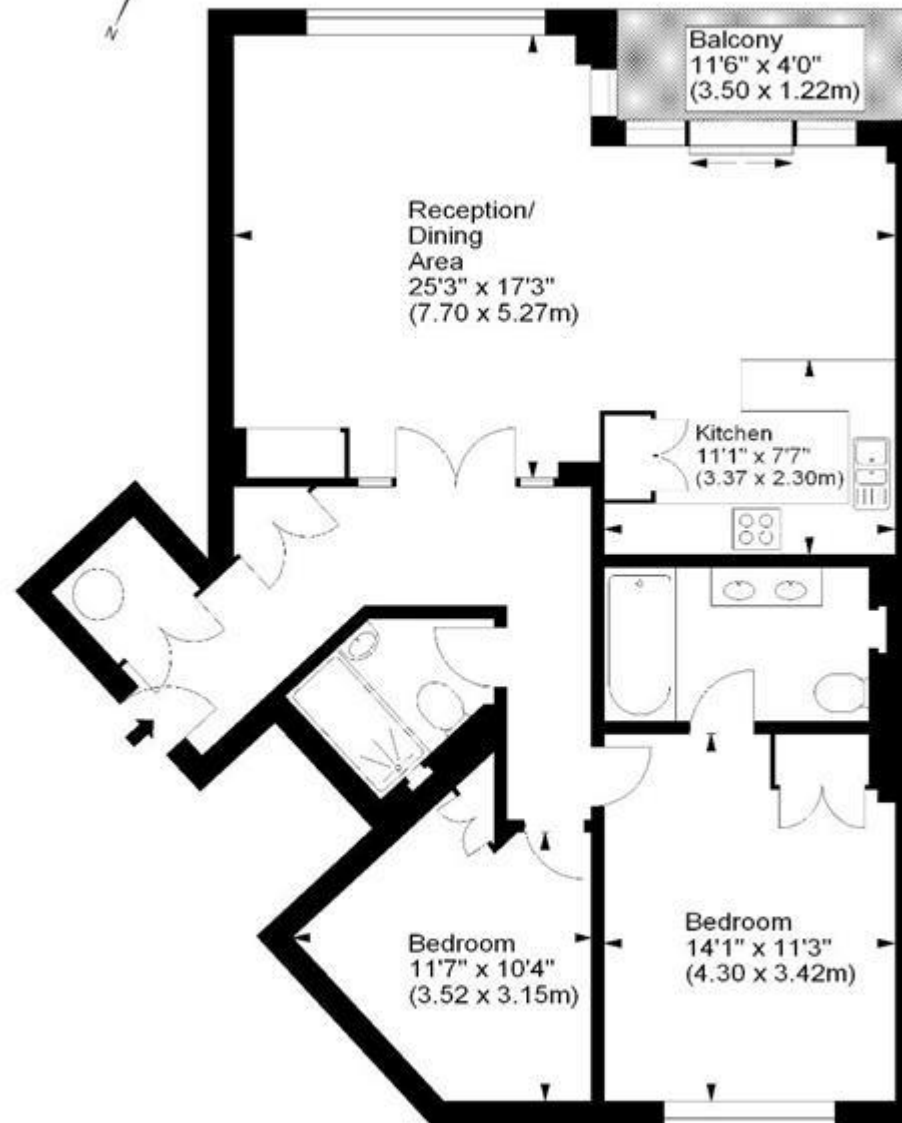
Service Charge: £12,000 per year

### **Tenure**

Leasehold (99 years)

## The Quadrangle, SW10

Approx. Gross Internal Area  
955 Sq Ft - 88.73 Sq M



### Fourth Floor

For illustration purposes only. Not to scale.  
All measurements are taken and shown at floor level.  
[www.r3photography.co.uk](http://www.r3photography.co.uk) © Photography / Floor Plans / Lease Plans / EPCs



Viewing by appointment only  
Milton Stone - Head Office  
53 Abingdon Road, London W8 6AN  
Tel: 0207 938 2311 Email: [info@miltonstone.com](mailto:info@miltonstone.com) Website: [www.miltonstone.com](http://www.miltonstone.com)