



Wickham Court, Ashburn Gardens, SW7

£1,495 pw

3 bedroom apartment to rent

Description

A modern three double bedroom apartment in the heart of South Kensington. The flat benefits from a fabulous 20 ft, high-ceilinged reception room with wooden floors and a balcony, two bathrooms (one en-suite) and a quiet sunny terrace at the rear of the property. Situated in a period stucco fronted building moments from Gloucester Road tube station and within walking distance of South Kensington and Hyde Park.

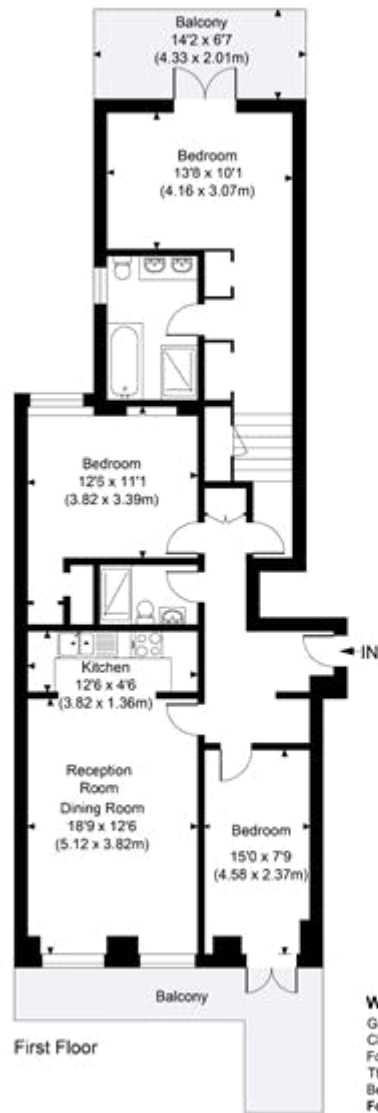
Disclaimer: A director of Milton Stone has an interest in this property.

Council Tax Band: G (The Royal Borough of Kensington and Chelsea)

Deposit: £10,170

Holding Deposit: £1,495





First Floor

Wickham Court

Gross Internal Area 1082 sq. ft / 100.48 sq. m

CH = Ceiling Heights

For identification purposes only.

The Position and size of doors, windows, appliances

Bedroom and other features are approximate only.

For illustrative purposes only - not to scale



Energy Efficiency Rating		Environmental Impact (CO ₂) Rating	
	Current	Potential	
Very energy efficient - lower running costs (92-100) A			Very environmentally friendly - lower CO ₂ emissions (92-100) A
(81-91) B			(81-91) B
(69-80) C			(69-80) C
(55-68) D			(55-68) D
(39-54) E			(39-54) E
(21-38) F			(21-38) F
(1-20) G			(1-20) G
Not energy efficient - higher running costs			Not environmentally friendly - higher CO ₂ emissions
England & Wales	EU Directive 2002/91/EC	68	England & Wales
			EU Directive 2002/91/EC
			80
			64

The energy efficiency rating is a measure of the overall efficiency of a home. The higher the rating the more energy efficient the home is and the lower the fuel bills will be.

The environmental impact rating is a measure of a home's impact on the environment in terms of carbon dioxide (CO₂).

Viewing by appointment only
 Milton Stone - Head Office
 53 Abingdon Road, London W8 6AN
 Tel: 0207 938 2311 Email: sophie@miltonstone.com Website: <http://www.miltonstone.com>

