



**P** Permit holders only  
CA - K/R  
Mon - Fri  
8.30 am - 6.30 pm

MILTON  
STONE

# Priory Road, London

3 bedroom flat for sale

£2,100,000 Share of Freehold

## Description

A beautifully presented maisonette located in this popular residential road in South Hampstead. This exquisite home features a west facing 44 ft rear garden, a stunning double reception/dining room separated by stylish crittal doors, 3 double bedrooms and a beautiful entrance hall through the grand private street entrance. Priory Road is located just off the famous Abbey Road and close to the extensive shops and amenities of West Hampstead. South Hampstead Station is also moments away.

Council Tax Band: G

Tenure: Share of Freehold

## Tenure

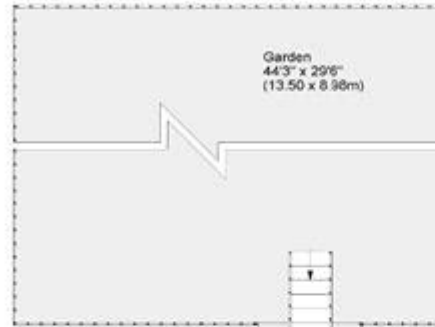
Share of Freehold



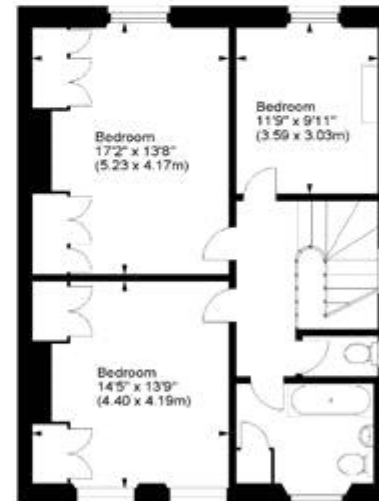
# Priory Road, NW6



Approx. Gross Internal Area  
1604 Sq Ft - 149.01 Sq M



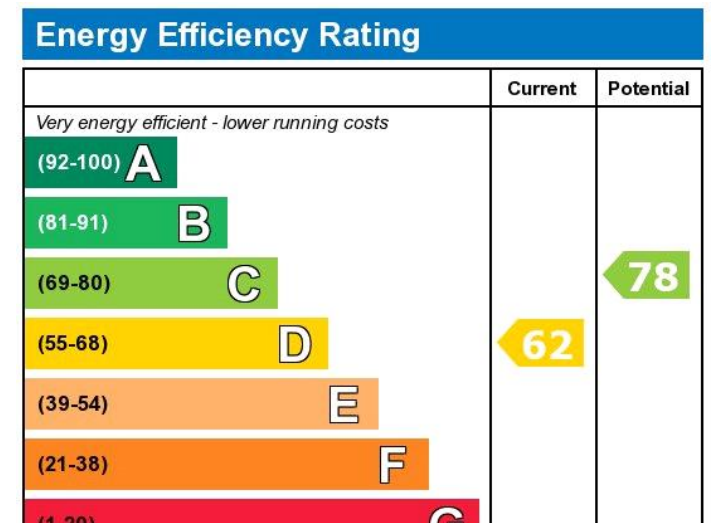
Raised Ground Floor



First Floor

For illustration purposes only. Not to scale.  
All measurements are taken and shown at floor level.  
[www.r3photography.co.uk](http://www.r3photography.co.uk) © Photography / Floor Plans / Lease Plans / EPCs





Viewing by appointment only  
 Milton Stone - Head Office  
 53 Abingdon Road, London W8 6AN  
 Tel: 0207 938 2311 Email: [info@miltonstone.com](mailto:info@miltonstone.com) Website: [www.miltonstone.com](http://www.miltonstone.com)

