



# Oxford Gardens, W10

£350,000 Share of Freehold

Studio for sale

## Description

A bright, well presented second floor studio apartment within a corner red brick period building in this popular location just off Ladbroke Grove.

The apartment features a modern open plan kitchen/reception room with a triple aspect and would make an ideal first-time purchase or rental investment.

Oxford Gardens is close to the local shops and underground station of Ladbroke Grove. Portobello Road with its excellent restaurants, bars and market is also only a short walk away.

Council Tax Band: B

Tenure: Share of Freehold

Service Charge: £820 per year

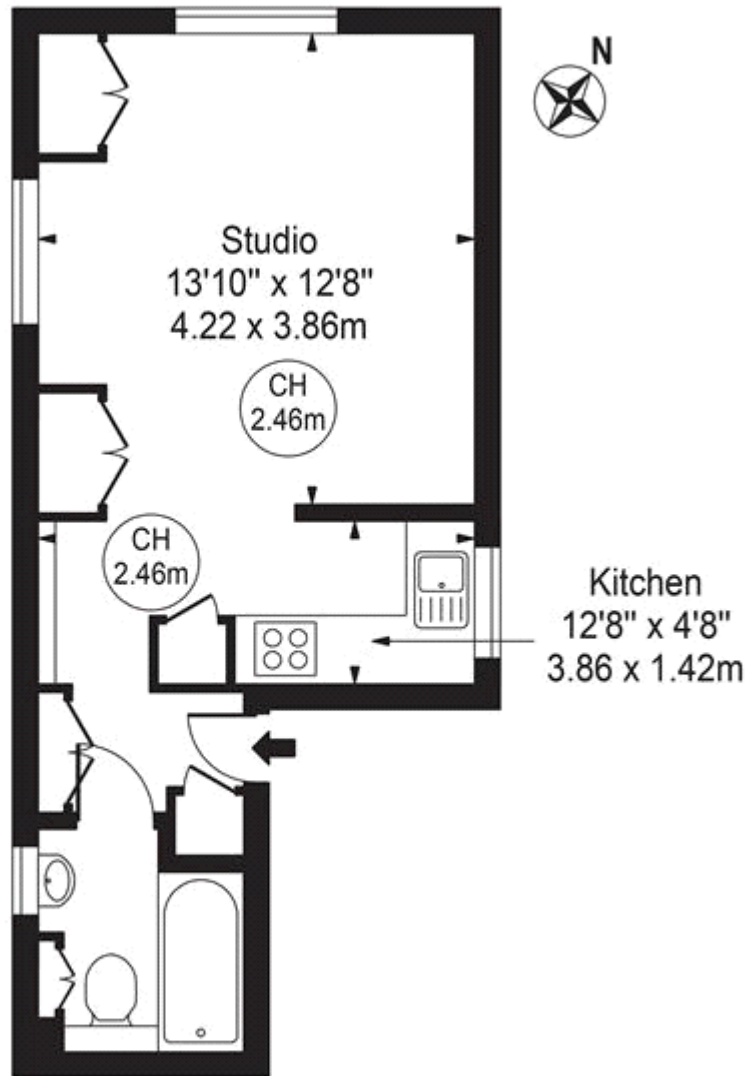
## Tenure

Share of Freehold



# Oxford Gardens

Approx. Gross Internal Area 306 Sq Ft - 28.43 Sq M



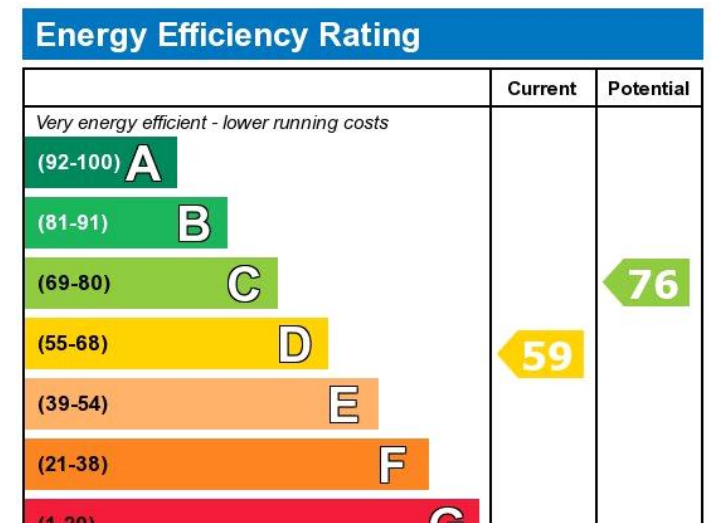
## Second Floor

For Illustration Purposes Only - Not To Scale

This floor plan should be used as a general outline for guidance only and does not constitute in whole or in part an offer or contract. Any intending purchaser or lessee should satisfy themselves by inspection, searches, enquiries and full survey as to the correctness of each statement. Any areas, measurements or distances quoted are approximate and should not be used to value a property or be the basis of any sale or let.

Copyright Morriarti Photography & Design LTD





Viewing by appointment only  
 Milton Stone - Head Office  
 53 Abingdon Road, London W8 6AN  
 Tel: 0207 938 2311 Email: [info@miltonstone.com](mailto:info@miltonstone.com) Website: [www.miltonstone.com](http://www.miltonstone.com)