



MILTON
STONE

Elvaston Place

£1,895,000 Leasehold

3 bedroom maisonette for sale

Description

This spacious raised ground and lower ground floor maisonette set in an imposing building comprises of a double reception room, three bedrooms, eat-in kitchen, and three bathrooms. This bright property offers excellent living space with high ceilings, good storage and wooden flooring throughout.

Elvaston Place is ideally located between Queens Gate and Gloucester Road and is within easy reach Imperial College, as well as the many shops, restaurants and excellent transport links offered by both South Kensington and Gloucester Road. The property is moments away from the open, green spaces of Hyde Park.

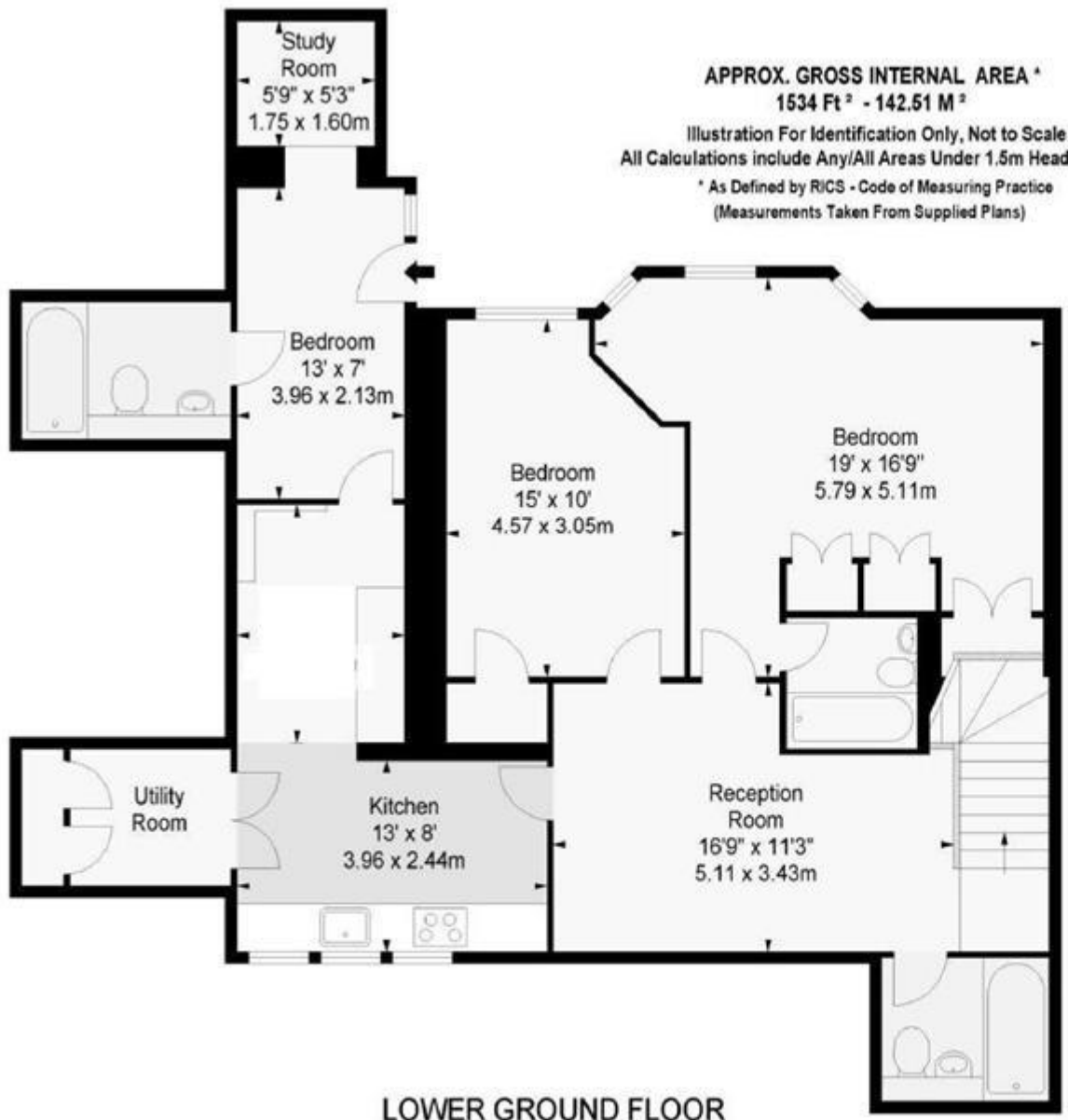


Council Tax Band: G

Tenure: Leasehold (100 years)

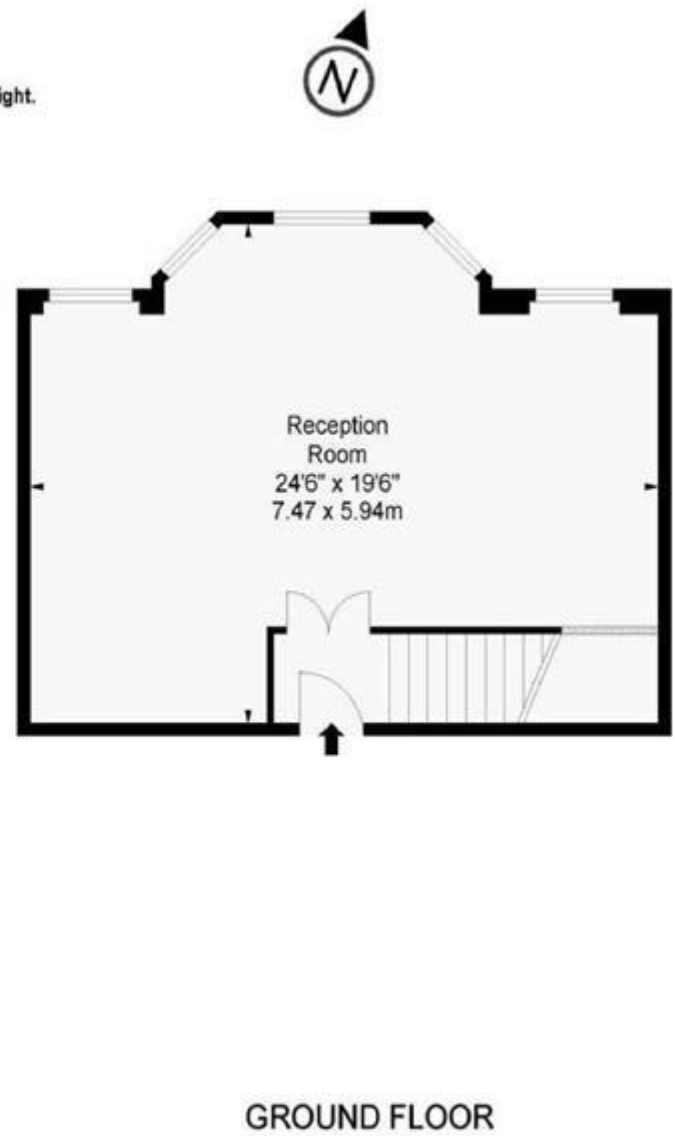
Tenure

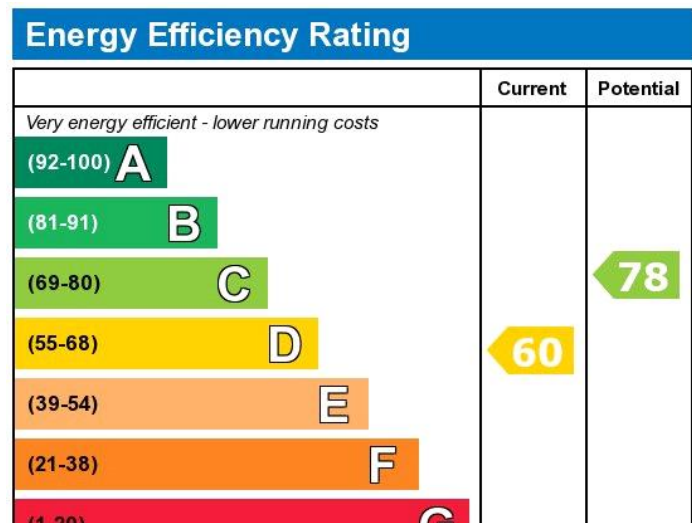
Leasehold (100 years)



APPROX. GROSS INTERNAL AREA *
1534 Ft² - 142.51 M²

Illustration For Identification Only, Not to Scale
All Calculations include Any/All Areas Under 1.5m Head Height.
* As Defined by RICS - Code of Measuring Practice
(Measurements Taken From Supplied Plans)





Viewing by appointment only
 Milton Stone - Head Office
 53 Abingdon Road, London W8 6AN
 Tel: 0207 938 2311 Email: info@miltonstone.com Website: www.miltonstone.com