



Cornwall Gardens

£950,000 Leasehold

2 bedroom apartment for sale

Description

A spacious apartment within a handsome period conversion featuring a large reception room perfect for entertaining, a pretty private patio, own street entrance and additional storage. Cornwall Gardens is a highly sought-after quiet garden square which is a short walk from Kensington Gardens and the excellent restaurants, shops and transport links of Gloucester Road.

Council Tax Band: F

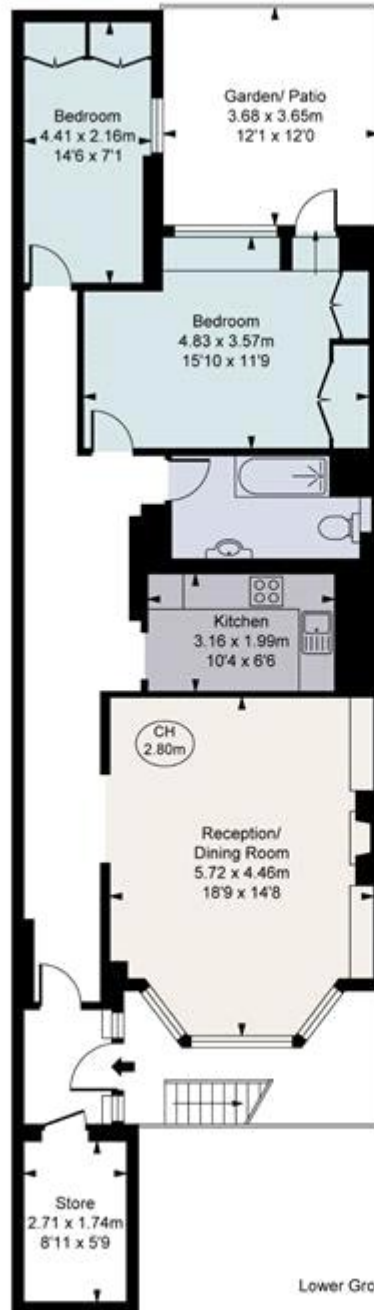
Tenure: Leasehold (141 years)

Tenure

Leasehold (141 years)

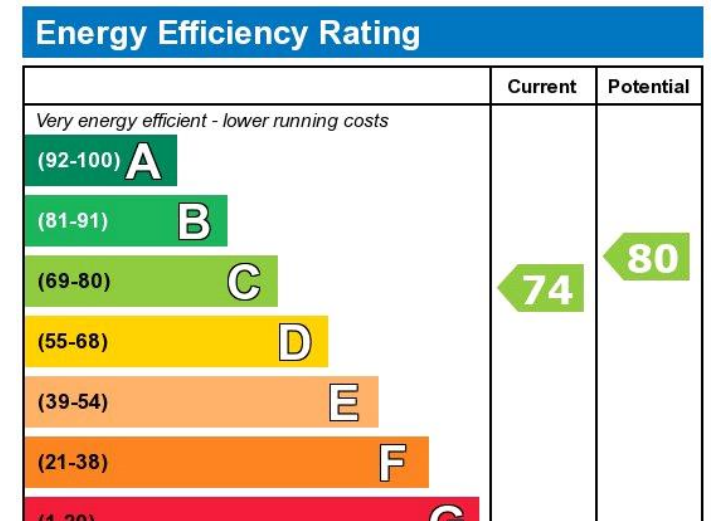


Cornwall Gardens, SW7
Approximate Gross Internal Area
93 sq m / 1001 sq ft
(CH = Ceiling Heights)



Lower Ground Floor

This plan is not to scale. It is for guidance and not for valuation purposes.
All measurements and areas are approximate only, and have been prepared in accordance with the current edition of the RICS Code of Measuring Practice.
© Fulham Performance



Viewing by appointment only
 Milton Stone - Head Office
 53 Abingdon Road, London W8 6AN
 Tel: 0207 938 2311 Email: info@miltonstone.com Website: www.miltonstone.com