



Cornwall Gardens, London

£995,000 Leasehold

2 bedroom flat for sale

Description

A bright, well-proportioned and newly modernised two bedroom flat on the third floor of a south facing period building overlooking communal gardens. Cornwall Gardens is a highly sought-after garden square, a short walk from Hyde Park and moments from Gloucester Road tube station.

Two Bedrooms : Two Bathrooms : Reception Room : Kitchen : Communal Gardens

Disclaimer: a Director of Milton Stone has an interest in this property.

Council Tax Band: G (The Royal Borough of Kensington and Chelsea)

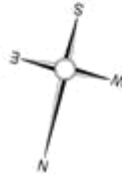
Tenure: Leasehold (122 years)

Service Charge: £2,375.06 per year

Tenure

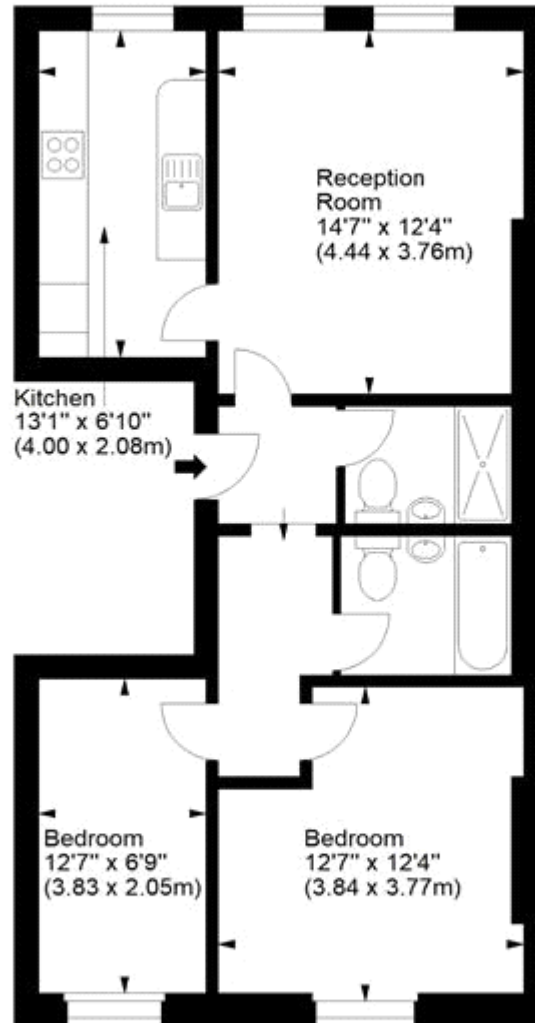
Leasehold (122 years)





Cornwall Gardens, SW7

Approx. Gross Internal Area
670 Sq Ft - 62.24 Sq M



Third Floor

For illustration purposes only. Not to scale.
All measurements are taken and shown at floor level.
www.r3photography.co.uk © Photography / Floor Plans / Lease Plans / EPCs

