



Cornwall Gardens, London

£1,195,000 Leasehold

2 bedroom flat for sale

Description

A bright, well-proportioned and newly modernised two bedroom flat on the third floor of a south facing period building overlooking communal gardens. Cornwall Gardens is a highly sought-after garden square, a short walk from Hyde Park and moments from Gloucester Road tube station.

Two Bedrooms : Two Bathrooms : Reception Room : Kitchen : Communal Gardens

Disclaimer: a Director of Milton Stone has an interest in this property.

Council Tax Band: G (The Royal Borough of Kensington and Chelsea)

Tenure: Leasehold (122 years)

Service Charge: £2,375.06 per year

Tenure

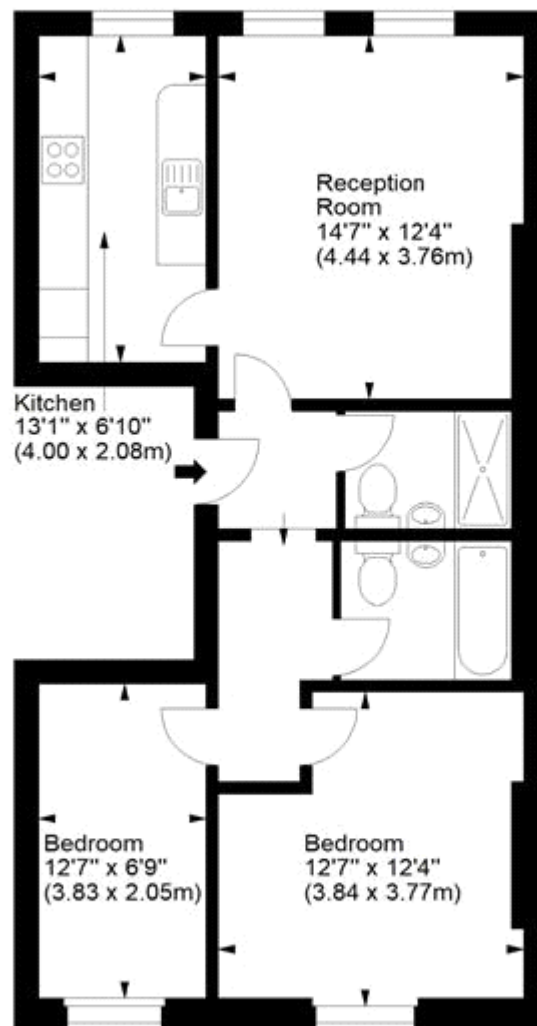
Leasehold (122 years)





Cornwall Gardens, SW7

Approx. Gross Internal Area
670 Sq Ft - 62.24 Sq M



Third Floor

For illustration purposes only. Not to scale.
All measurements are taken and shown at floor level.
www.r3photography.co.uk © Photography / Floor Plans / Lease Plans / EPCs



Energy Efficiency Rating		Environmental Impact (CO ₂) Rating	
	Current	Potential	
Very energy efficient - lower running costs (92-100) A			Very environmentally friendly - lower CO ₂ emissions (92-100) A
(81-91) B			(81-91) B
(69-80) C			(69-80) C
(55-68) D			(55-68) D
(39-54) E			(39-54) E
(21-38) F			(21-38) F
(1-20) G			(1-20) G
Not energy efficient - higher running costs			Not environmentally friendly - higher CO ₂ emissions
England & Wales	EU Directive 2002/91/EC	61	England & Wales
The energy efficiency rating is a measure of the overall efficiency of a home. The higher the rating the more energy efficient the home is and the lower the fuel bills will be.			The environmental impact rating is a measure of a home's impact on the environment in terms of carbon dioxide (CO ₂)

Viewing by appointment only
Milton Stone - Head Office
53 Abingdon Road, London W8 6AN
Tel: 0207 938 2311 Email: info@miltonstone.com Website: www.miltonstone.com

