



Ovington Square, London

£1,750,000 Leasehold

2 bedroom maisonette for sale

Description

A rare opportunity to acquire a first and second floor two bedroom maisonette in this fabulous Knightsbridge garden square. This well-proportioned apartment features a beautiful drawing room with French doors to a balcony, two double bedrooms (both en-suite), a south facing rear terrace accessed via the kitchen/breakfast room and a separate guest cloakroom. Ovington Square is a short walk from Harrods and the extensive shopping and restaurant facilities of Brompton Road and Walton Street. Knightsbridge tube station (Piccadilly Line) is moments away.

Council Tax Band: G

Tenure: Leasehold (953 years)

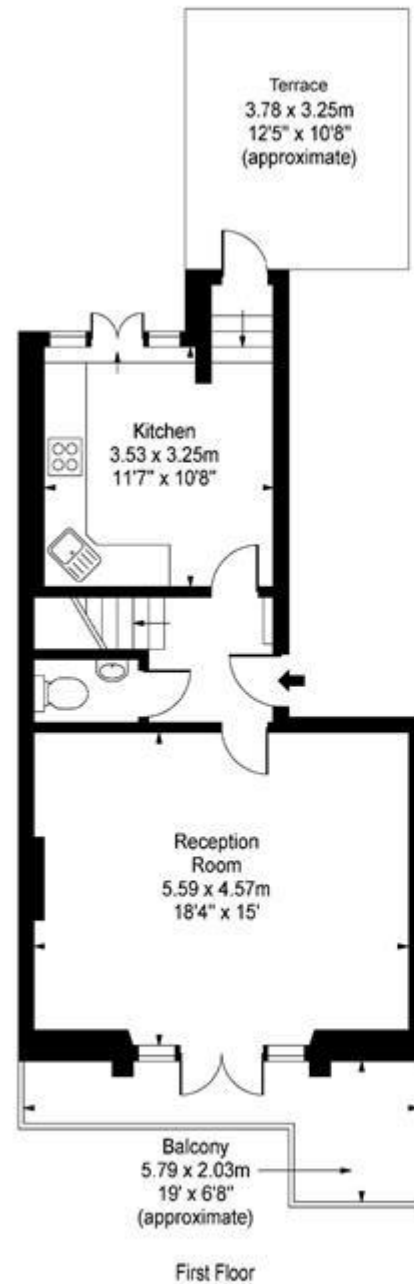
Share of Freehold

Tenure

Leasehold (953 years)

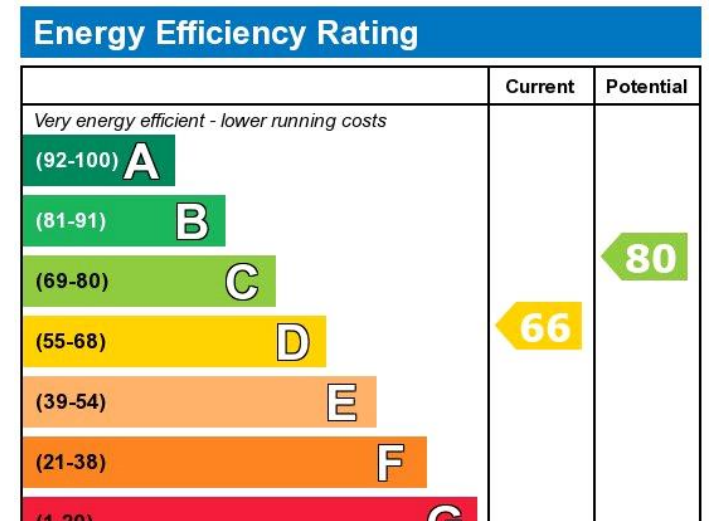


Ovington Square, London SW3



Approx Gross Internal Area 952 Sq Ft - 88.44 Sq M

This floor plan should be used as a general outline for guidance only and does not constitute in whole or in part an offer or contract.
Any intending purchaser or lessee should satisfy themselves by inspection, searches, enquiries and full survey as to the correctness of each statement.
Any areas, measurements or distances quoted are approximate and should not be used to value a property or be the basis of any sale or let.



Viewing by appointment only
 Milton Stone - Head Office
 53 Abingdon Road, London W8 6AN
 Tel: 0207 938 2311 Email: info@miltonstone.com Website: www.miltonstone.com