



MILTON
STONE

Cornwall Gardens, London

£1,195,000 Leasehold

2 bedroom flat for sale

Description

A bright, well-proportioned and newly modernised two bedroom flat on the third floor of a south facing period building overlooking communal gardens. Cornwall Gardens is a highly sought-after garden square, a short walk from Hyde Park and moments from Gloucester Road tube station.

Two Bedrooms : Two Bathrooms : Reception Room : Kitchen : Communal Gardens

Disclaimer: a Director of Milton Stone has an interest in this property.

Council Tax Band: G (The Royal Borough of Kensington and Chelsea)

Tenure: Leasehold (122 years)

Service Charge: £2,375.06 per year

Tenure

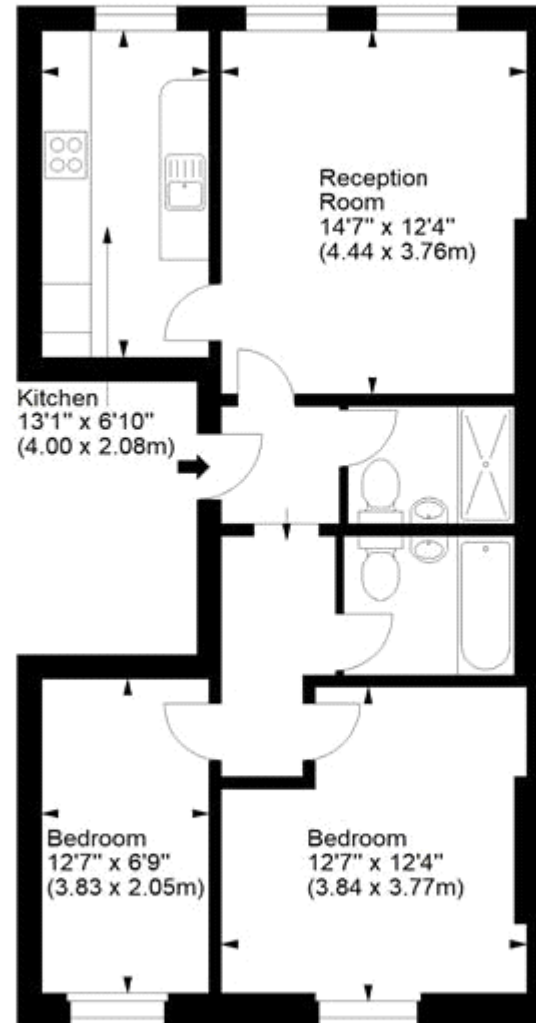
Leasehold (122 years)





Cornwall Gardens, SW7

Approx. Gross Internal Area
670 Sq Ft - 62.24 Sq M



Third Floor

For illustration purposes only. Not to scale.
All measurements are taken and shown at floor level.
www.r3photography.co.uk © Photography / Floor Plans / Lease Plans / EPCs



Energy Efficiency Rating		Environmental Impact (CO ₂) Rating	
Current	Potential	Current	Potential
Very energy efficient - lower running costs		Very environmentally friendly - lower CO ₂ emissions	
(92-100) A		(92-100) A	
(81-91) B		(81-91) B	
(69-80) C		(69-80) C	
(55-68) D		(55-68) D	
(39-54) E		(39-54) E	49
(21-38) F	40	(21-38) F	48
(1-20) G		(1-20) G	
Not energy efficient - higher running costs		Not environmentally friendly - higher CO ₂ emissions	
England & Wales EU Directive 2002/91/EC		England & Wales EU Directive 2002/91/EC	

The energy efficiency rating is a measure of the overall efficiency of a home. The higher the rating the more energy efficient the home is and the lower the fuel bills will be.

The environmental impact rating is a measure of a home's impact on the environment in terms of carbon dioxide (CO₂)

Viewing by appointment only
 Milton Stone - Head Office
 53 Abingdon Road, London W8 6AN
 Tel: 0207 938 2311 Email: info@miltonstone.com Website: www.miltonstone.com

