



MILTON
STONE

Sydney Street, SW3

£3,500,000 Freehold

5 bedroom freehold house for sale

Description

A unique opportunity to acquire a whole freehold building currently arranged as three flats in this beautiful period building in the heart of Kensington and Chelsea. The apartments all require modernisation, and the property benefits from a large 40 ft garden with rear access to Bury Walk. Sydney Street is located between Fulham Road and King's Road and is therefore within a short walking distance of the excellent local shopping, restaurant, and transport facilities.

Council Tax Band: G

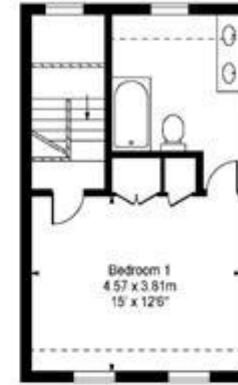
Tenure: Freehold

Tenure

Freehold



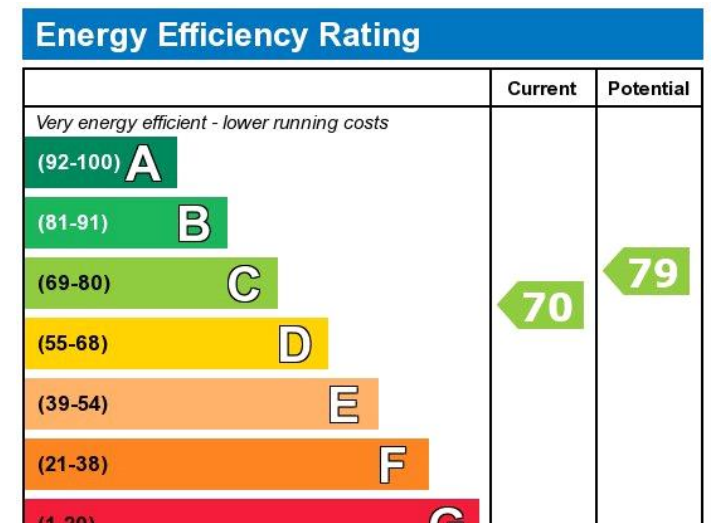
Sydney Street, SW3



Lower Ground Floor

Approx Gross Internal Area 2328 Sq Ft - 216.27 Sq M

This floor plan should be used as a general outline for guidance only and does not constitute in whole or in part an offer or contract. Any intending purchaser or lessee should satisfy themselves by inspection, searches, enquiries and full survey as to the correctness of each statement. Any area, measurements or distances quoted are approximate and should not be used to value a property or be the basis of any sale or let.



Viewing by appointment only
 Milton Stone - Head Office
 53 Abingdon Road, London W8 6AN
 Tel: 0207 938 2311 Email: info@miltonstone.com Website: www.miltonstone.com