



MILTON
STONE

Weymouth Court, 1 Weymouth Street, London

£2,995,000 Leasehold

3 bedroom apartment for sale

Description

An exceptionally well presented 3 double bedroom apartment on the fifth floor (with lift) of this prestigious block benefitting from an outstanding 25 ft reception room and a contemporary kitchen/dining room. The property has been beautifully refurbished to a high specification throughout and includes a storeroom in the basement of the building. Weymouth Court is an attractive period building with a passenger lift and caretaker, located just moments from the restaurants and shops of Great Portland Street and a short walk from the fashionable Marylebone High Street.

Council Tax Band: G

Tenure: Leasehold (113 years)

Service Charge: £7,543 per year

Tenure

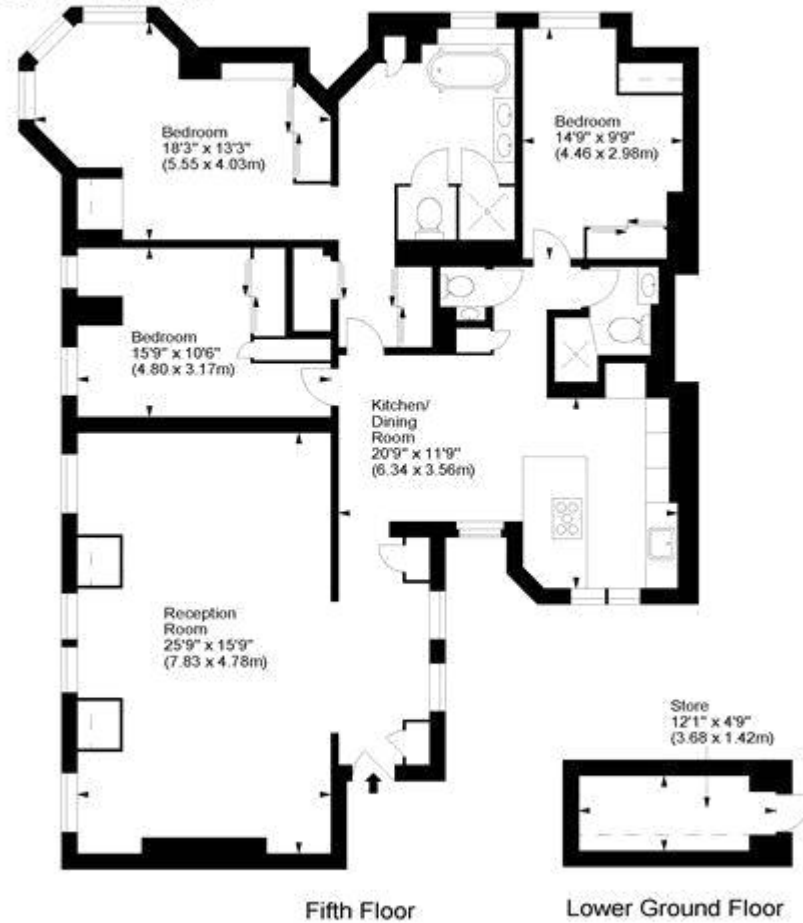
Leasehold (113 years)



Weymouth Court, W1



Approx. Gross Internal Area
1512 Sq Ft - 140.43 Sq M
Approx. Gross Store Area
53 Sq Ft - 4.92 Sq M
Approx. Total Area
1565 Sq Ft - 145.39 Sq M



For illustration purposes only. Not to scale.
All measurements are taken and shown at floor level.
www.r3photography.co.uk © Photography / Floor Plans / Lease Plans / EPCs





Energy Efficiency Rating		
	Current	Potential
Very energy efficient - lower running costs		
(92-100) A		
(81-91) B		
(69-80) C		76
(55-68) D	56	
(39-54) E		
(21-38) F		
(1-20) G		

Viewing by appointment only
 Milton Stone - Head Office
 53 Abingdon Road, London W8 6AN
 Tel: 0207 938 2311 Email: info@miltonstone.com Website: www.miltonstone.com

