



# Abingdon Road, London

£1,350,000 Share of Freehold

3 bedroom maisonette for sale

## Description

A spacious and well-proportioned 3 bedroom ground floor maisonette in this converted period building in the heart of Kensington. The apartment features a terrace, patio garden and two private entrances. Abingdon Road is close to Stratford Village and a short walk from Kensington High Street

Council Tax Band: F

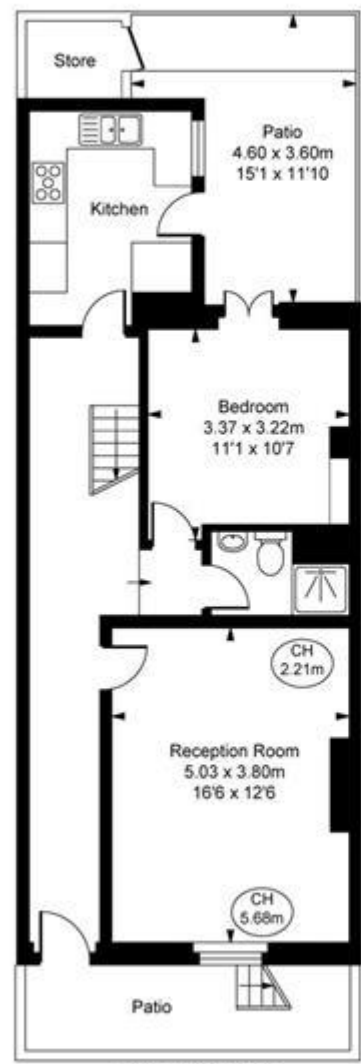
Tenure: Share of Freehold

## Tenure

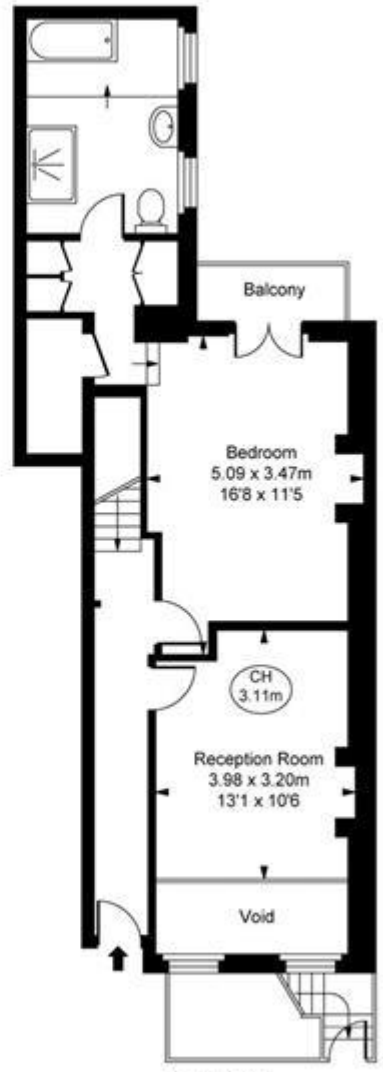
Share of Freehold



Abingdon Road, W8  
 Approximate Gross Internal Area  
 110.28 sq m / 1,187 sq ft  
 (Excluding Void)  
 ( CH = Ceiling Heights )



Lower Ground Floor  
 Approximate Gross Internal Area  
 59.60 sq m / 642 sq ft



Ground Floor  
 Approximate Gross Internal Area  
 50.68 sq m / 546 sq ft

ILLUSTRATION FOR IDENTIFICATION PURPOSES ONLY  
 ALL MEASUREMENTS ARE MAXIMUM, AND INCLUDE WINDOW BAYS AND WARDROBES WHERE APPLICABLE  
 THIS PLAN MUST NOT BE REPRODUCED BY ANY OTHER PERSON WITHOUT PERMISSION



Energy Efficiency Rating		
	Current	Potential
Very energy efficient - lower running costs		
(92-100) <b>A</b>		
(81-91) <b>B</b>		
(69-80) <b>C</b>	74	79
(55-68) <b>D</b>		
(39-54) <b>E</b>		
(21-38) <b>F</b>		
(1-20) <b>G</b>		

Viewing by appointment only  
 Milton Stone - Head Office  
 53 Abingdon Road, London W8 6AN  
 Tel: 0207 938 2311 Email: info@miltonstone.com Website: www.miltonstone.com

