



Richmond House

£435,000 Leasehold

1 bedroom apartment for sale

Description

A generously proportioned one bedroom flat situated on the second floor of this small purpose built building with the entrance on Child's Place, a quiet cul-de-sac off The Earls Court Road.

This bright flat is open on three sides and has original herringbone parquet flooring throughout.

On the top floor of the building (4th floor) there is a communal roof terrace and a demised storage room of 8'6 x 6'6 included with this flat.

The flat is currently a rental investment until November 2023.

Council Tax Band: E

Tenure: Leasehold (56 years)

Ground Rent: £50 per year

Service Charge: £1,700 per year

Tenure

Leasehold (56 years)



Richmond House, SW5

Approximate gross internal area

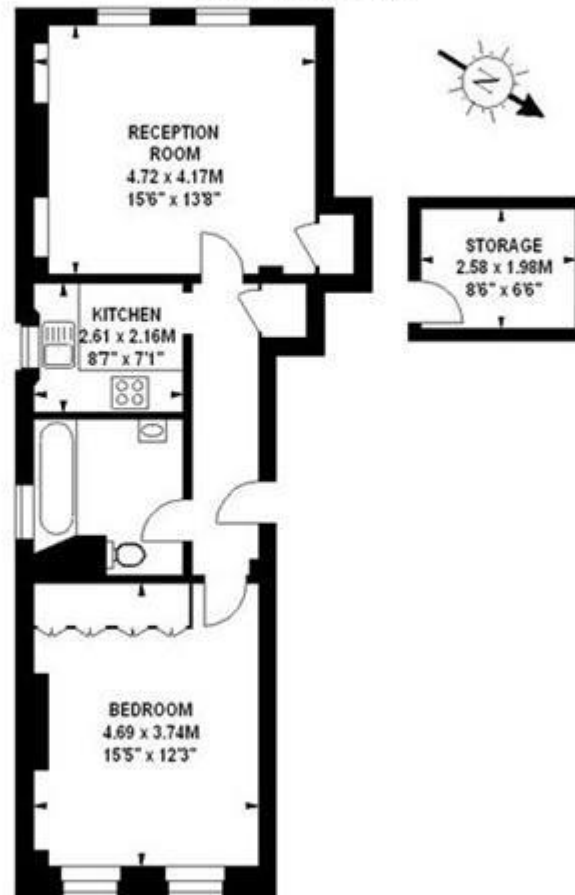
57.68 sq m / 621 sq ft

Storage

5.02 sq m / 54 sq ft

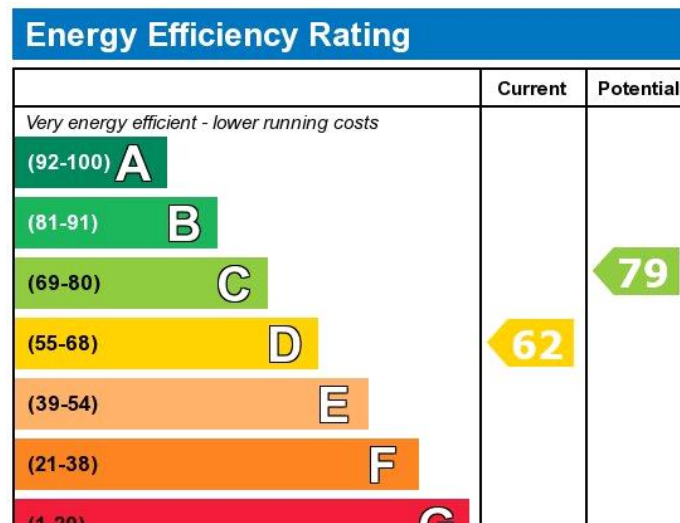
Total

62.71 sq m / 675 sq ft



Second Floor

Illustration For Identification Purposes Only. Not To Scale
*Floorplan Drawn According To RICS Guidelines
Copyright of FeaturePRO



Viewing by appointment only
 Milton Stone - Head Office
 53 Abingdon Road, London W8 6AN
 Tel: 0207 938 2311 Email: info@miltonstone.com Website: www.miltonstone.com