



---

# Wickham Court, Ashburn Gardens, SW7

£1,695 pw

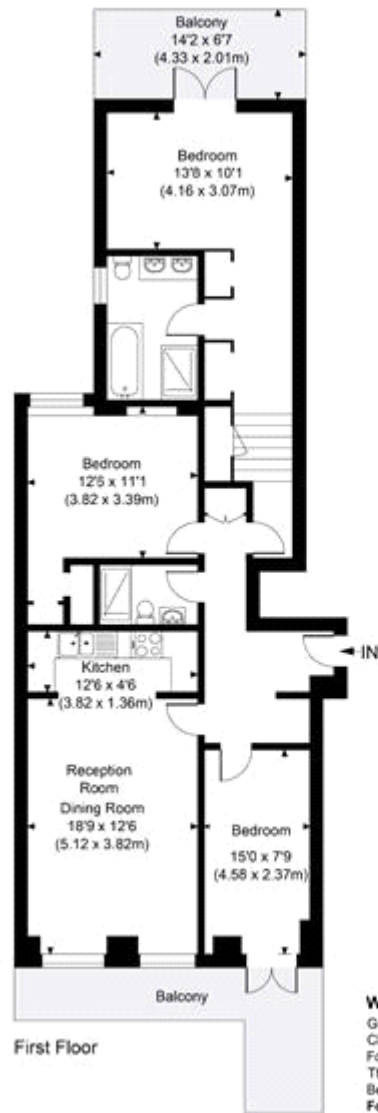
3 bedroom apartment to rent

---

## Description

A modern three double bedroom apartment in the heart of South Kensington. The flat benefits from a fabulous 20 ft, high-ceilinged reception room with wooden floors and a balcony, two bathrooms (one en-suite) and a quiet sunny terrace at the rear of the property. Situated in a period stucco fronted building moments from Gloucester Road tube station and within walking distance of South Kensington and Hyde Park.





**Wickham Court**

Gross Internal Area 1082 sq. ft / 100.48 sq. m

CH = Ceiling Heights

For identification purposes only.

The Position and size of doors, windows, appliances

Bedroom and other features are approximate only.

For illustrative purposes only - not to scale



