



# Campden Hill Court, W8

£1,690,000 Leasehold

3 bedroom apartment for sale

## Description

A beautifully presented and spacious 3 double bedroom apartment with direct access to communal gardens. This portered building is moments from Kensington High Street and a short walk from Holland Park.

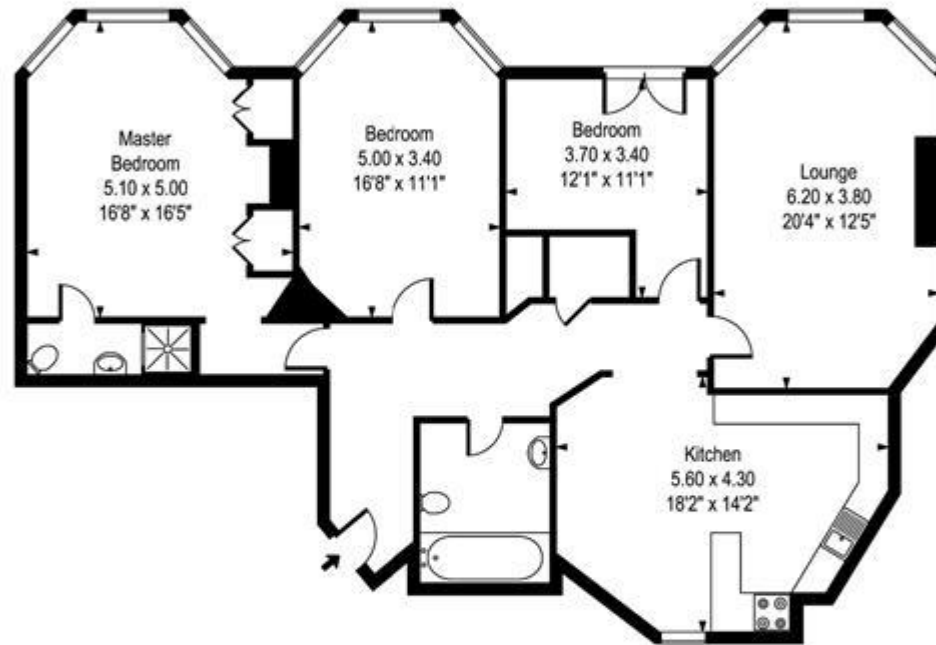
Tenure: Leasehold

## Tenure

Leasehold



## Campden Hill Court



Lower Ground Floor Flat

**Approx Gross Internal Area 1228 Sq Ft - 114 Sq M**

Whilst every attempt has been made to ensure the accuracy of the floor plan contained here, measurements of the doors, windows, rooms and any other items are approximate and no responsibility is taken for any error, omission, or mis-statement. This plan is for illustrative purposes only and should be used as such by any prospective purchaser. The services, systems and appliances shown have not been tested and no guarantee as to their operability or efficiency can be given.



Energy Efficiency Rating		Environmental Impact (CO <sub>2</sub> ) Rating	
	Current	Potential	
Very energy efficient - lower running costs			Very environmentally friendly - lower CO <sub>2</sub> emissions
(92-100) <b>A</b>			(92-100) <b>A</b>
(81-91) <b>B</b>			(81-91) <b>B</b>
(69-80) <b>C</b>			(69-80) <b>C</b>
(55-68) <b>D</b>			(55-68) <b>D</b>
(39-54) <b>E</b>			(39-54) <b>E</b>
(21-38) <b>F</b>			(21-38) <b>F</b>
(1-20) <b>G</b>			(1-20) <b>G</b>
Not energy efficient - higher running costs			Not environmentally friendly - higher CO <sub>2</sub> emissions
<b>England &amp; Wales</b>	EU Directive 2002/91/EC	<b>65</b>	<b>England &amp; Wales</b>
		<b>81</b>	EU Directive 2002/91/EC
			<b>60</b>
			<b>81</b>

The energy efficiency rating is a measure of the overall efficiency of a home. The higher the rating the more energy efficient the home is and the lower the fuel bills will be.

The environmental impact rating is a measure of a home's impact on the environment in terms of carbon dioxide (CO<sub>2</sub>).

Viewing by appointment only  
 Milton Stone - Head Office  
 53 Abingdon Road, London W8 6AN  
 Tel: 0207 938 2311 Email: info@miltonstone.com Website: www.miltonstone.com

