



MILTON
STONE

Cornwall Gardens, SW7

£525,000 Share of Freehold

Studio for sale

Description

A bright and spacious studio apartment with its own street entrance in a beautiful grand stucco fronted period building in this sought-after garden square. Cornwall Gardens is a short walk from Hyde Park and moments from the extensive shops and restaurants of South Kensington, and from Gloucester Road tube station.

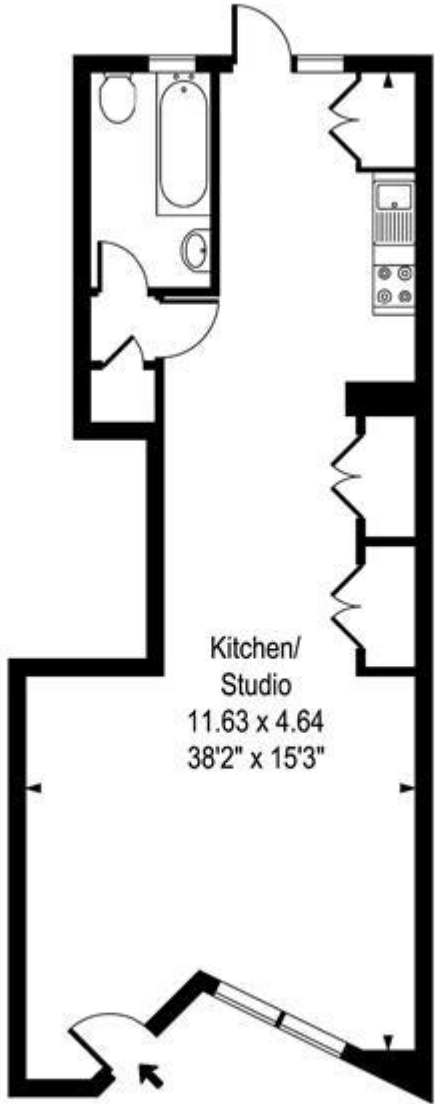
Tenure: Share of Freehold

Tenure

Share of Freehold



Cornwall Gardens SW7



Lower Ground Floor

Approx Gross Internal Area **482 Sq Ft - 44.74 Sq M**

Whilst every attempt has been made to ensure the accuracy of the floor plan contained here, measurements of the doors, windows, rooms and any other items are approximate and no responsibility is taken for any error, omission, or mis-statement. This plan is for illustrative purposes only and should be used as such by any prospective purchaser. The services, systems and appliances shown have not been tested and no guarantee as to their operability or efficiency can be given.

