



MILTON
STONE

Alma Square, NW8

£4,995,000 Freehold

5 bedroom terraced house for sale

Description

A beautifully presented and newly refurbished 5 double bedroom Freehold period house overlooking the communal gardens of St Johns Wood's only Garden Square. This bright and spacious terraced house has stunning views front and back and benefits from a large kitchen/dining room leading on to a South-West facing rear garden, a double reception room and separate study, and a roof terrace on the first floor overlooking the magnificent gardens of Hamilton Terrace. Alma Square is a short walk from St Johns Wood tube station (Jubilee Line) and the restaurants and shops of St Johns Wood High Street. Please note that this property is tenanted until 4/08/22

Disclaimer: A director of Milton Stone has an interest in this property.

Tenure: Freehold

Tenure

Freehold

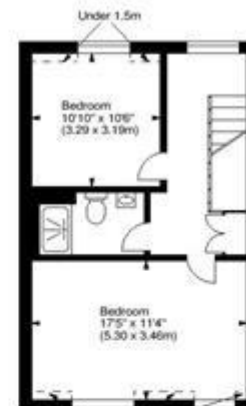




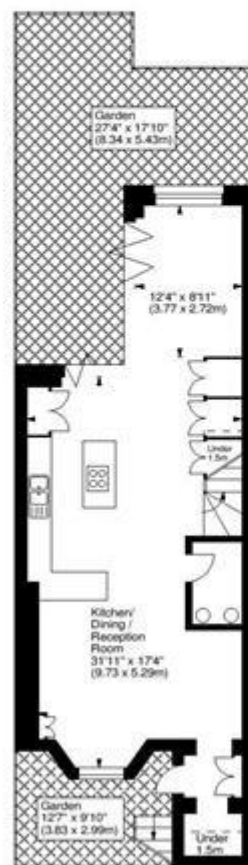
Alma Square, NW8
 Approx. Gross Internal Area
 2940 Sq Ft - 273.13 Sq M



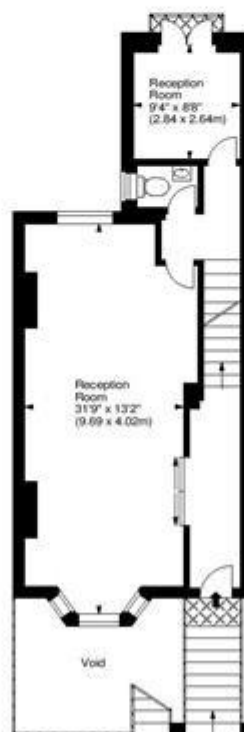
Second Floor



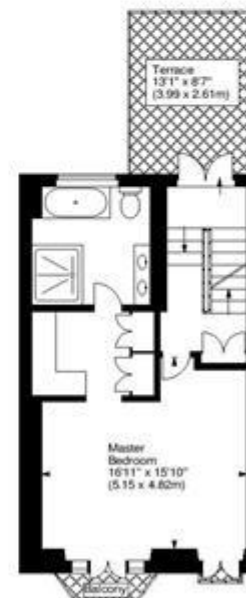
Third Floor



Lower Ground Floor



Raised Ground Floor



First Floor

For illustration purposes only. Not to scale.
 All measurements are taken and shown at floor level.
www.dphotography.co.uk © Photography / Floor Plans / Lease Plans / EPCs



Energy Efficiency Rating		Environmental Impact (CO ₂) Rating	
	Current	Potential	
Very energy efficient - lower running costs (92-100) A			Very environmentally friendly - lower CO ₂ emissions (92-100) A
(81-91) B			(81-91) B
(69-80) C			(69-80) C
(55-68) D			(55-68) D
(39-54) E			(39-54) E
(21-38) F			(21-38) F
(1-20) G			(1-20) G
Not energy efficient - higher running costs			Not environmentally friendly - higher CO ₂ emissions
England & Wales		England & Wales	
EU Directive 2002/91/EC		EU Directive 2002/91/EC	
The energy efficiency rating is a measure of the overall efficiency of a home. The higher the rating the more energy efficient the home is and the lower the fuel bills will be.		The environmental impact rating is a measure of a home's impact on the environment in terms of carbon dioxide (CO ₂)	

Viewing by appointment only
Milton Stone - Head Office
53 Abingdon Road, London W8 6AN
Tel: 0207 938 2311 Email: info@miltonstone.com Website: www.miltonstone.com

