



MILTON
STONE

Thurloe Square, London

£3,495,000 Share of Freehold

4 bedroom flat for sale

Description

In need of refurbishment, this ground and lower ground maisonette offers approximately 2000 sqft (186sqm) of accommodation and overlooks this beautiful two acre garden square situated between South Kensington and Knightsbridge.

- 21ft wooden floored reception with a fireplace and 3.6m ceiling height * Kitchen * Dining room with access to two terraces * guest cloakroom * Master bedroom with ensuite shower room * Second double bedroom with ensuite bathroom * Two further double bedrooms * Family bathroom * Utility room * Patio

JSA: Foxtons

Tenure: Share of Freehold (999 years)

Service Charge: £3,900 per year

Tenure

Share of Freehold (999 years)

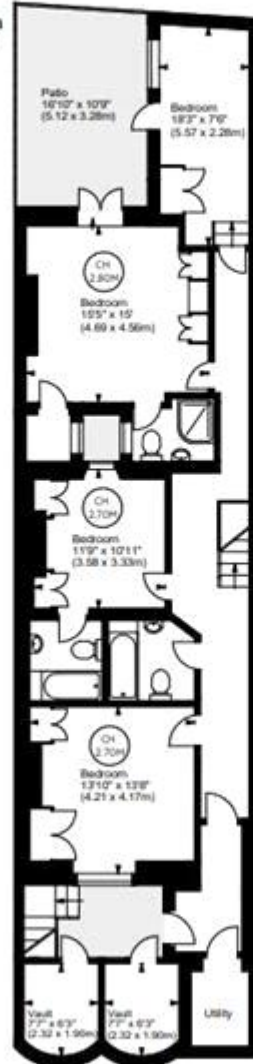


Thurloe Square, SW7

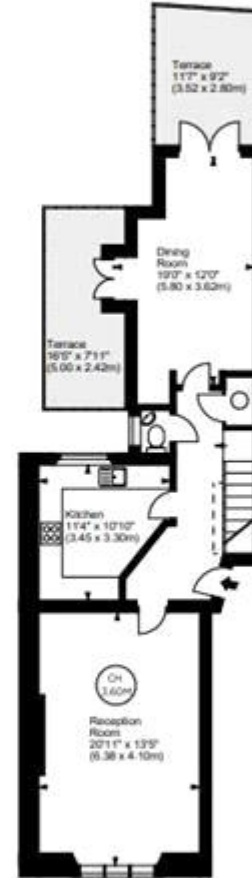


Approx. Gross Internal Area
1910 Sq Ft - 177.44 Sq M
Vaults
Approx. Gross Internal Area
94 Sq Ft - 8.73 Sq M
Total Area
Approx. Gross Internal Area
2004 Sq Ft - 186.17 Sq M

Key :
CH - Ceiling Height



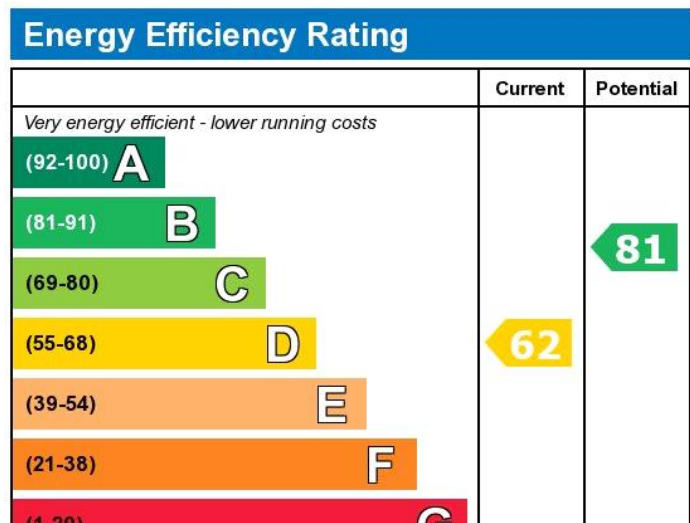
Lower Ground Floor



Raised Ground Floor

For illustration purposes only. Not to scale.
All measurements are taken and shown at floor level.
www.r3photography.co.uk © Photography / Floor Plans / Lease Plans / EPCs





Viewing by appointment only
 Milton Stone - Head Office
 53 Abingdon Road, London W8 6AN
 Tel: 0207 938 2311 Email: info@miltonstone.com Website: www.miltonstone.com