



Westbourne Terrace W2

£1,625,000 Leasehold

2 bedroom apartment for sale

Description

A stunning two bedroom apartment on the first floor of a white stucco fronted period building close to Hyde Park. The reception room has high ceilings and fabulous floor to ceiling windows with access to a balcony. Westbourne Terrace is a wide tree-lined street close to Paddington mainline station and Lancaster Gate tube station

Tenure: Leasehold (85 years)

Tenure

Leasehold (85 years)

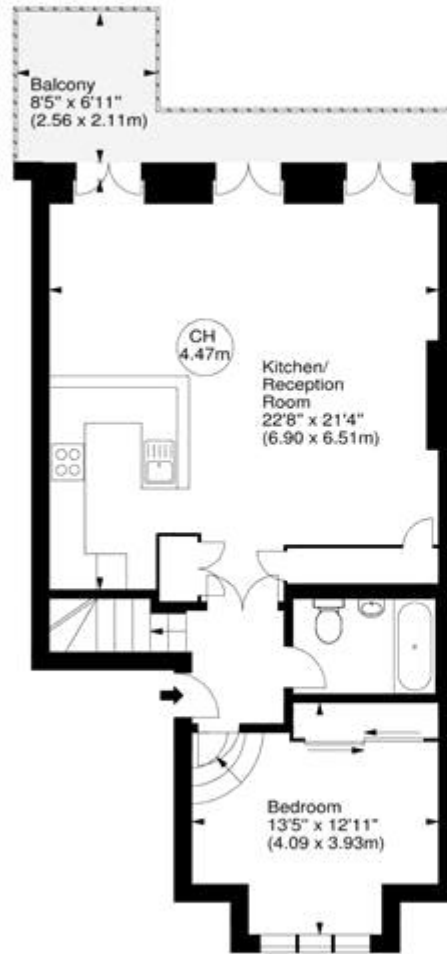


Westbourne Terrace, W2

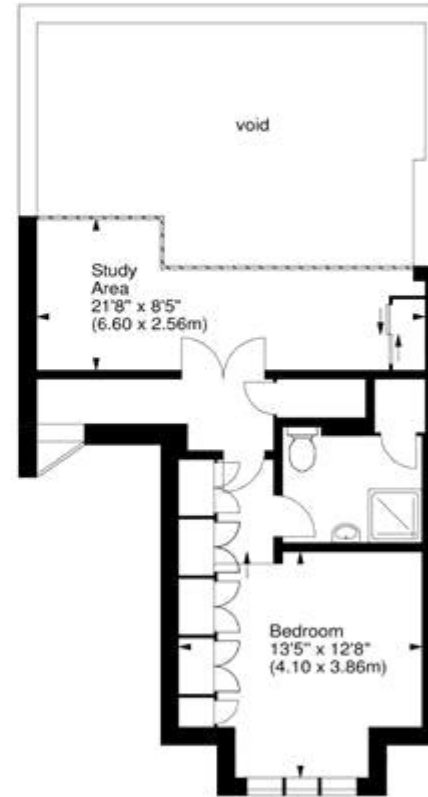


Approx. Gross Internal Area
1201 Sq Ft - 111.57 Sq M

Key :
CH - Ceiling Height



First Floor



Second Floor

For illustration purposes only. Not to scale.
All measurements are taken and shown at floor level.
www.r3photography.co.uk © Photography / Floor Plans / Lease Plans / EPCs





Energy Efficiency Rating		
	Current	Potential
Very energy efficient - lower running costs		
(92-100) A		
(81-91) B		
(69-80) C	71	72
(55-68) D		
(39-54) E		
(21-38) F		
(1-20) G		

Viewing by appointment only
 Milton Stone - Head Office
 53 Abingdon Road, London W8 6AN
 Tel: 0207 938 2311 Email: info@miltonstone.com Website: www.miltonstone.com