



Sydney Street, SW3

£625,000 Leasehold

1 bedroom flat for sale

Description

A first floor flat in Chelsea.

This contemporary home is located moments from Kings Road and South Kensington and within easy walking distance to Knightsbridge and Hyde Park.

The open plan reception features large windows opening out to a balcony, a well proportioned bedroom with storage and an ensuite bathroom.

Tenure: Leasehold (83 years)

Ground Rent: £300 per year

Service Charge: £2,165 per year

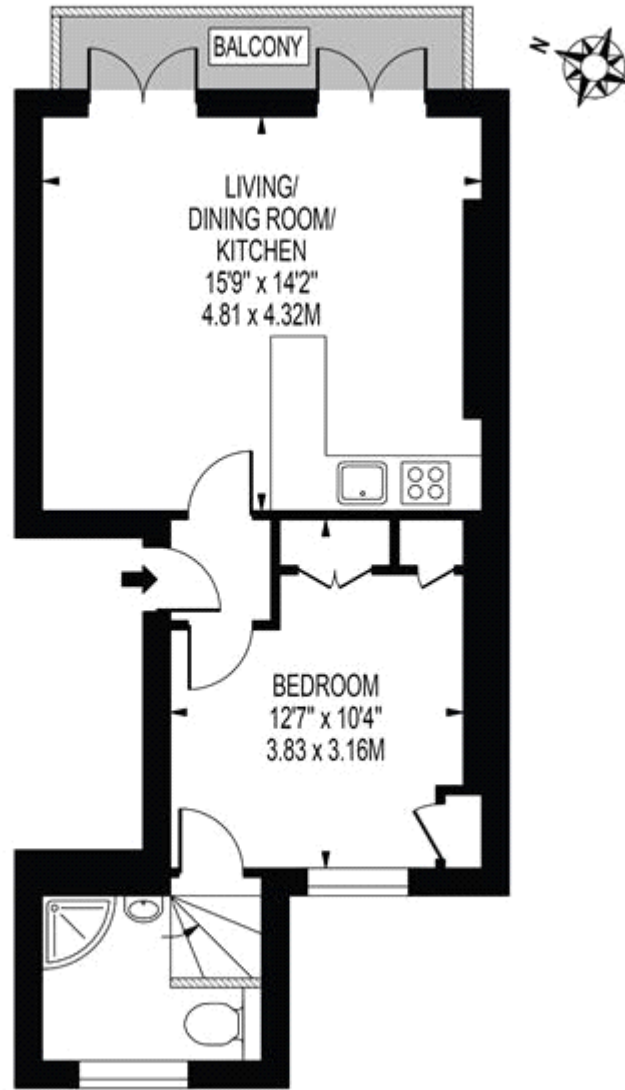
Tenure

Leasehold (83 years)



SYDNEY STREET

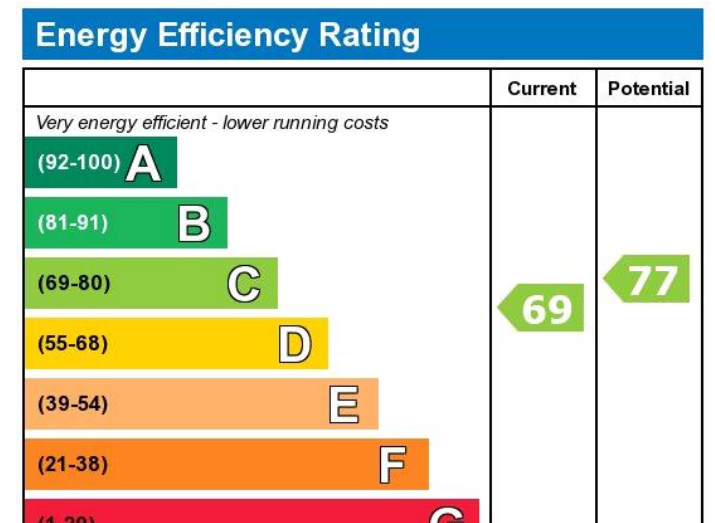
APPROXIMATE GROSS INTERNAL FLOOR AREA: 408 SQ FT - 37.90 SQ M



FIRST FLOOR

FOR ILLUSTRATION PURPOSES ONLY

THIS FLOOR PLAN SHOULD BE USED AS A GENERAL OUTLINE FOR GUIDANCE ONLY AND DOES NOT CONSTITUTE IN WHOLE OR IN PART AN OFFER OR CONTRACT. ANY INTENDING PURCHASER OR LESSEE SHOULD SATISFY THEMSELVES BY INSPECTION, SEARCHES, ENQUIRES AND FULL SURVEY AS TO THE CORRECTNESS OF EACH STATEMENT. ANY AREAS, MEASUREMENTS OR DISTANCES QUOTED ARE APPROXIMATE AND SHOULD NOT BE USED TO VALUE A PROPERTY OR BE THE BASIS OF ANY SALE OR LET.



Viewing by appointment only
 Milton Stone - Head Office
 53 Abingdon Road, London W8 6AN
 Tel: 0207 938 2311 Email: info@miltonstone.com Website: www.miltonstone.com