



MILTON
STONE

Musgrave Crescent, London

£2,400,000 Freehold

5 bedroom house for sale

Description

A bright, spacious and well presented five bedroom family home with off-street parking in this highly sought-after location overlooking Eel Brook Common. The house offers fabulous entertaining space including a formal reception room overlooking the common and an open plan kitchen, dining and family room leading out to a beautifully landscaped 39ft rear garden. Musgrave Crescent is moments from the extensive amenities of New Kings Road and Fulham Broadway Underground Station (District Line).

Tenure: Freehold

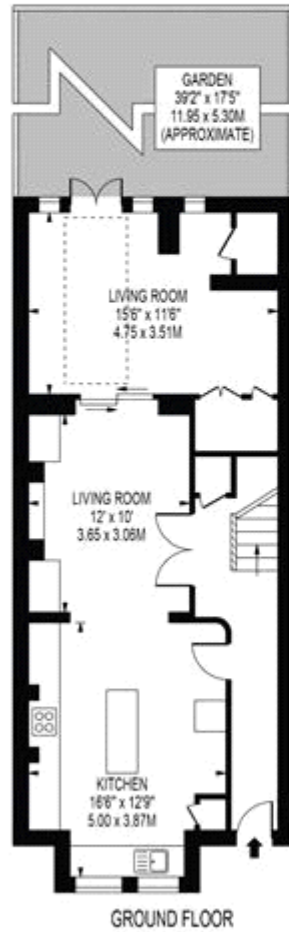
Tenure

Freehold



MUSGRAVE CRESCENT

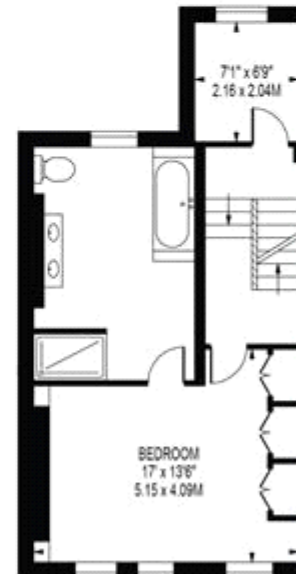
APPROXIMATE GROSS INTERNAL FLOOR AREA: 2096 SQ FT - 194.72 SQ M



FOR ILLUSTRATION PURPOSES ONLY



THIRD FLOOR



SECOND FLOOR

THIS FLOOR PLAN SHOULD BE USED AS A GENERAL OUTLINE FOR GUIDANCE ONLY AND DOES NOT CONSTITUTE IN WHOLE OR IN PART AN OFFER OR CONTRACT. ANY INTENDING PURCHASER OR LESSEE SHOULD SATISFY THEMSELVES BY INSPECTION, SEARCHES, ENQUIRIES AND FULL SURVEY AS TO THE CORRECTNESS OF EACH STATEMENT. ANY AREAS, MEASUREMENTS OR DISTANCES QUOTED ARE APPROXIMATE AND SHOULD NOT BE USED TO VALUE A PROPERTY OR BE THE BASIS OF ANY SALE OR LET.



Energy Efficiency Rating		
	Current	Potential
Very energy efficient - lower running costs		
(92-100) A		
(81-91) B		
(69-80) C		79
(55-68) D		
(39-54) E	53	
(21-38) F		
(1-20) G		

Viewing by appointment only
 Milton Stone - Head Office
 53 Abingdon Road, London W8 6AN
 Tel: 0207 938 2311 Email: info@miltonstone.com Website: www.miltonstone.com