



MILTON
STONE

Cornwall Gardens, SW7

3 bedroom maisonette for sale

£5,395,000 Share of Freehold

Description

A stunning, newly refurbished first and second floor 3 double bedroom maisonette on the favoured North Terrace of this popular garden square facing South over communal gardens. The apartment is located on the West corner of Launceston Place and benefits from a triple aspect and an abundance of natural light, a 22 foot decked roof terrace, a South facing front balcony and access to communal gardens.

Tenure: Share of Freehold

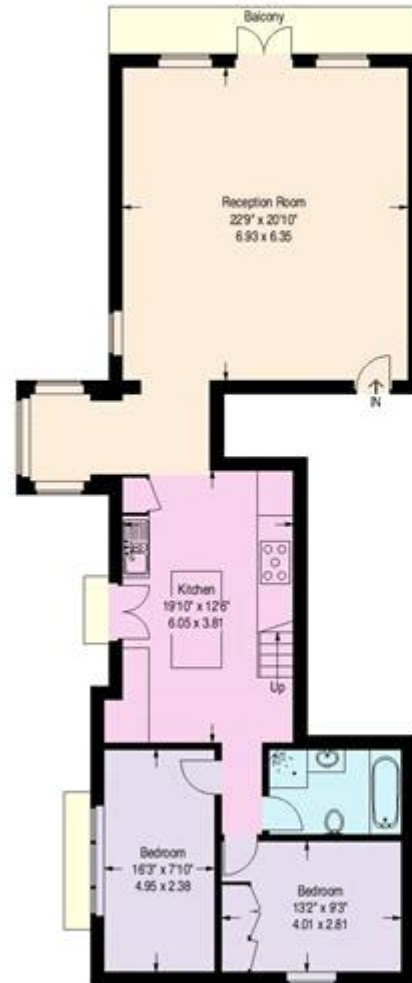
Tenure

Share of Freehold

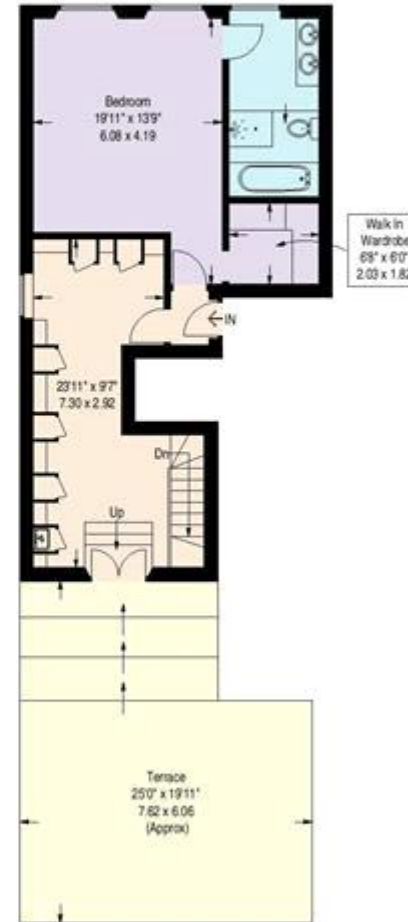


Cornwall Gardens, SW7

Approximate Gross Internal Area
1948 sq ft / 181 sq m



First Floor



Second Floor

Illustration for identification purposes only, measurements are approximate, not to scale.

