



MILTON  
STONE

# Thurloe Square, London

£3,495,000 Share of Freehold

4 bedroom flat for sale

## Description

In need of refurbishment, this ground and lower ground maisonette offers approximately 2000 sqft (186sqm) of accommodation and overlooks this beautiful two acre garden square situated between South Kensington and Knightsbridge.

- 21ft wooden floored reception with a fireplace and 3.6m ceiling height \* Kitchen \* Dining room with access to two terraces \* guest cloakroom \* Master bedroom with ensuite shower room \* Second double bedroom with ensuite bathroom \* Two further double bedrooms \* Family bathroom \* Utility room \* Patio

JSA: Foytons

Tenure: Share of Freehold (999 years)

Service Charge: £3,900 per year

## Tenure

Share of Freehold (999 years)

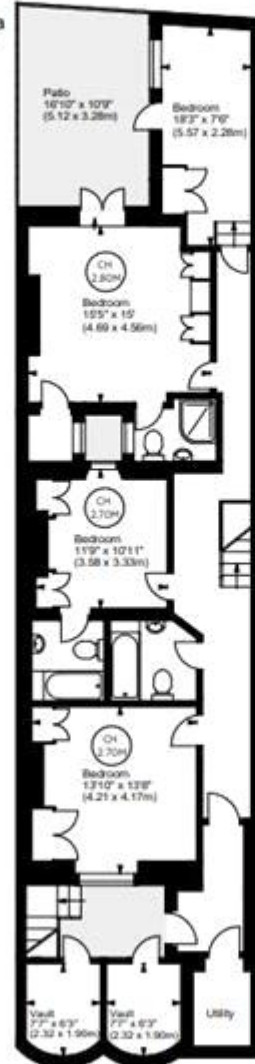


# Thurloe Square, SW7

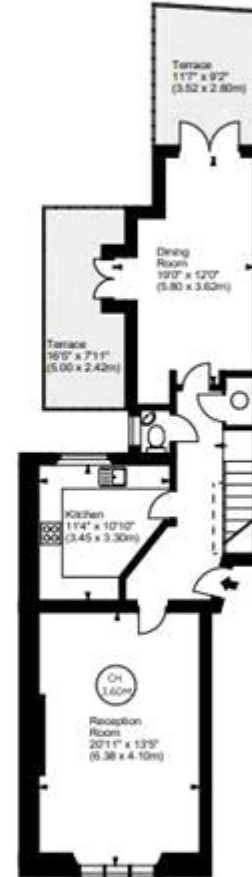


Approx. Gross Internal Area  
1910 Sq Ft - 177.44 Sq M  
Vaults  
Approx. Gross Internal Area  
94 Sq Ft - 8.73 Sq M  
Total Area  
Approx. Gross Internal Area  
2004 Sq Ft - 186.17 Sq M

Key :  
CH - Ceiling Height



Lower Ground Floor



Raised Ground Floor

For illustration purposes only. Not to scale.  
All measurements are taken and shown at floor level.  
[www.r3photography.co.uk](http://www.r3photography.co.uk) © Photography / Floor Plans / Lease Plans / EPCs





Energy Efficiency Rating		
	Current	Potential
<i>Very energy efficient - lower running costs</i>		
(92-100) <b>A</b>		
(81-91) <b>B</b>		<b>81</b>
(69-80) <b>C</b>		
(55-68) <b>D</b>	<b>62</b>	
(39-54) <b>E</b>		
(21-38) <b>F</b>		
(1-20) <b>G</b>		

Viewing by appointment only  
 Milton Stone - Head Office  
 53 Abingdon Road, London W8 6AN  
 Tel: 0207 938 2311 Email: [info@miltonstone.com](mailto:info@miltonstone.com) Website: [www.miltonstone.com](http://www.miltonstone.com)