



# Onslow Gardens, SW7

£1,200 pw

3 bedroom apartment to rent

## Description

A beautiful three bedroom maisonette located on the ground and lower ground floor on the prestigious Onslow Gardens.

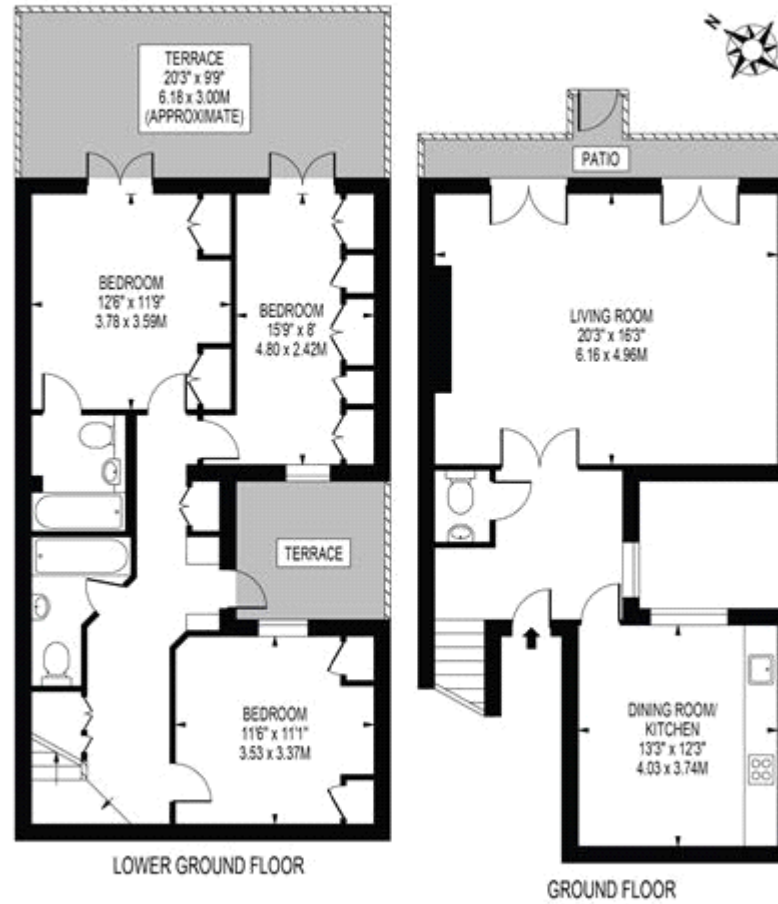
The flat has been beautifully decorated throughout and benefits from a spacious reception room with large floor to ceiling windows giving access to the balcony overlooking the gardens. The kitchen is also a good size with plenty of space for a dining table. The three bedrooms are located on the lower ground floor and benefit from built in storage, two of the bedrooms further boast direct access to a private patio and the stunning communal gardens.

The property is ideally located only a moments walk from shops, restaurants and museums of South Kensington.



# ONSLow GARDENS

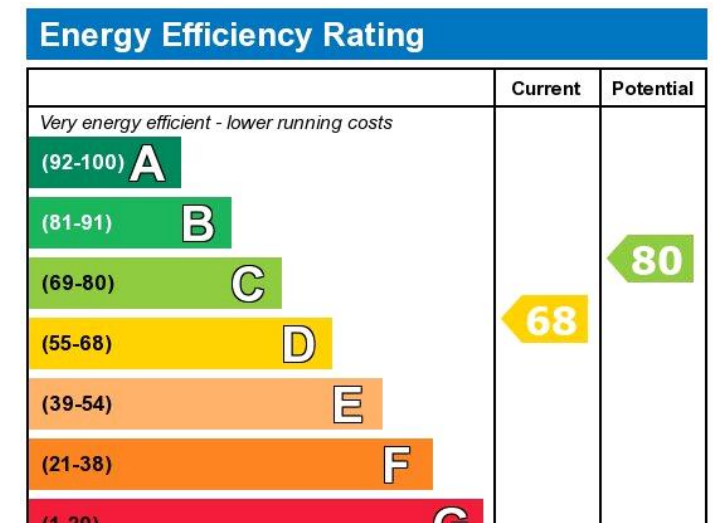
APPROXIMATE GROSS INTERNAL FLOOR AREA: 1267 SQ FT - 117.73 SQ M



FOR ILLUSTRATION PURPOSES ONLY

THIS FLOOR PLAN SHOULD BE USED AS A GENERAL OUTLINE FOR GUIDANCE ONLY AND DOES NOT CONSTITUTE IN WHOLE OR IN PART AN OFFER OR CONTRACT. ANY INTENDING PURCHASER OR LESSEE SHOULD SATISFY THEMSELVES BY INSPECTION, SEARCHES, ENQUIRIES AND FULL SURVEY AS TO THE CORRECTNESS OF EACH STATEMENT. ANY AREAL MEASUREMENTS OR DISTANCES QUOTED ARE APPROXIMATE AND SHOULD NOT BE USED TO VALUE A PROPERTY OR BE THE BASIS OF ANY SALE OR LET.





Viewing by appointment only  
 Milton Stone - Head Office  
 53 Abingdon Road, London W8 6AN  
 Tel: 0207 938 2311 Email: [saritha@miltonstone.com](mailto:saritha@miltonstone.com) Website: <http://www.miltonstone.com>