



MILTON
STONE

Ennismore Gardens Mews, SW7

£3,495,000 Freehold

3 bedroom mews house for sale

Description

Situated in a very pretty cobbled mews just off Ennismore Gardens, this Freehold, double fronted three storey house, offers bright west facing accommodation on the first and second floors above garages for up to 3 cars.

There is current planning in place to create further accommodation by excavating a basement.

Reception, Kitchen/Dining room, Master Bedroom with En-suite Bathroom, Two further Double Bedrooms, Family Bathroom, Cloakroom, Utility room, Double Garage, Single garage, Terrace.

Tenure

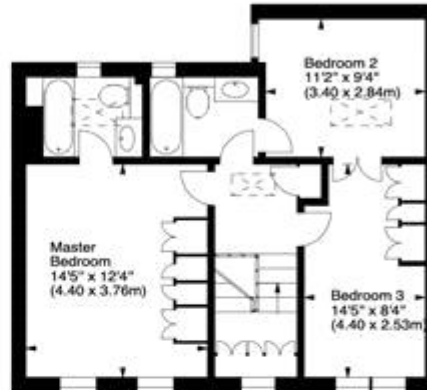
Freehold



Ennismore Gardens Mews, SW7



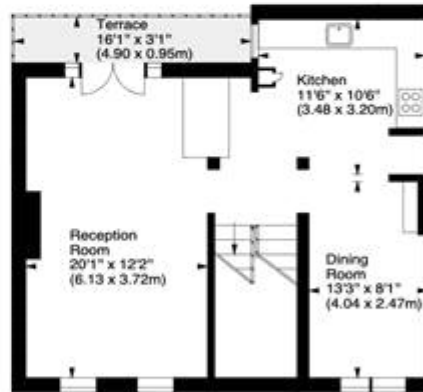
Approx. Gross Internal Area
1864 Sq Ft - 173.17 Sq M
(Including Garage)



Second Floor



Ground Floor



First Floor

For illustration purposes only. Not to scale.
All measurements are taken and shown at floor level.
www.r3photography.co.uk © Photography / Floor Plans / Lease Plans / EPCs





Energy Efficiency Rating		
	Current	Potential
Very energy efficient - lower running costs		
(92-100) A		
(81-91) B		
(69-80) C		76
(55-68) D		
(39-54) E	49	
(21-38) F		
(1-20) G		

Viewing by appointment only
 Milton Stone - Head Office
 53 Abingdon Road, London W8 6AN
 Tel: 0207 938 2311 Email: info@miltonstone.com Website: www.miltonstone.com