



The Marlborough, Walton Street, SW3

£675 pw

1 bedroom apartment to rent

Description

A bright and spacious one bedroom flat located on the raised ground floor in a portered and gated Victorian mansion block just a few minutes walk from Knightsbridge, Chelsea and South Kensington.

The property features, a well proportioned and light reception room with very good ceiling height, a master bedroom with ensuite bathroom and an eat-in kitchen.

The property is located close to the amenities of South Kensington and Knightsbridge with easy access to both Underground stations (District, Piccadilly and Circle lines).

Available now, furnished.



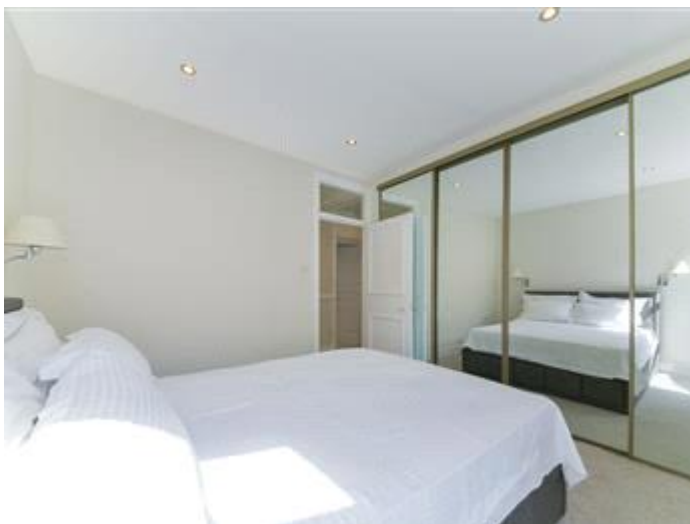
Walton Street, SW3

APPROX. GROSS INTERNAL AREA *
519 Sq Ft - 48.22 Sq M

This floorplan is for GUIDANCE ONLY and NOT FOR VALUATION purposes.



RAISED GROUND FLOOR



Energy Efficiency Rating		
	Current	Potential
Very energy efficient - lower running costs		
(92-100) A		
(81-91) B		
(69-80) C	70	78
(55-68) D		
(39-54) E		
(21-38) F		
(1-20) G		

Viewing by appointment only
Milton Stone - Head Office
53 Abingdon Road, London W8 6AN
Tel: 0207 938 2311 Email: sm@miltonstone.com Website: <http://www.miltonstone.com>