



Hormead Road, W9

£695,000 Share of Freehold

2 bedroom flat for sale

Description

A bright and sunny 2 bedroom flat on the ground and lower ground floor of this period house with wonderful views of the canal from the garden and bedroom. Located in a convenient street just minutes from Westbourne Park Tube this attractive apartment benefits from a south facing garden/patio which overlooks the canal with its colourful barges and lovely light.

Hormead Road is nicely positioned being a short walk to all the cafes, shops and restaurants in the trendy Portobello, Ledbury and Golborne Roads to the West and Little Venice to the East. For international travellers Paddington Station is only 2 stops from Westbourne Park Tube connecting in minutes to the Heathrow Express.

Sitting Room, 2 Double Bedrooms, Bathroom, Kitchen,
Garden/Patio, Canal Views

Tenure

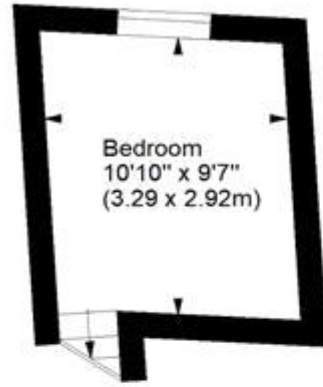
Share of Freehold



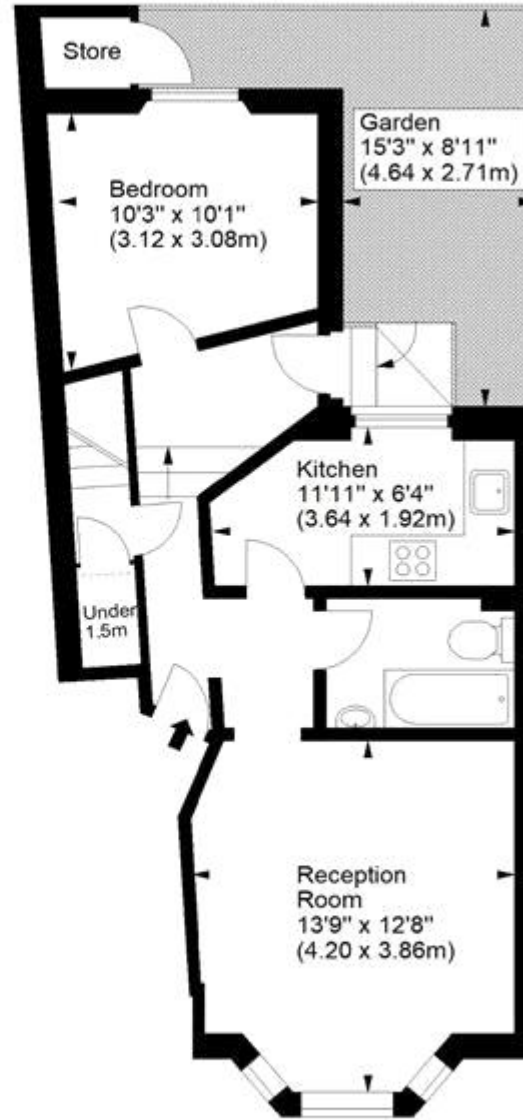
Horstead Road, W9



Approx. Gross Internal Area
630 Sq Ft - 58.53 Sq M



Lower Ground Floor



Ground Floor

For illustration purposes only. Not to scale.
All measurements are taken and shown at floor level.
www.r3photography.co.uk © Photography / Floor Plans / Lease Plans / EPCs



