



# Cromwell Road, SW7

£1,625,000 Leasehold

4 bedroom apartment for sale

## Description

A lateral four bedroom second floor apartment set within this period Victorian building offering high ceilings and period features.

The apartment offers well laid out accommodation with a wooden floored double reception room and a large kitchen/breakfast room. The apartment is offered in good condition throughout yet still allows scope for an incoming purchaser to redesign to their own taste.

30 ft South facing double Reception room \* Kitchen/Breakfast Room  
\* 3 Double Bedrooms \* Family Bathroom \* Guest Cloakroom \*  
Bedroom 4/ Study

Leasehold : 99 years from 14th December 1983 with approximately 63 years remaining.

Ground rent : £100 per annum doubling every 33 years therefore £200 currently.

Service Charge : £1500 per annum approximately.

## Tenure

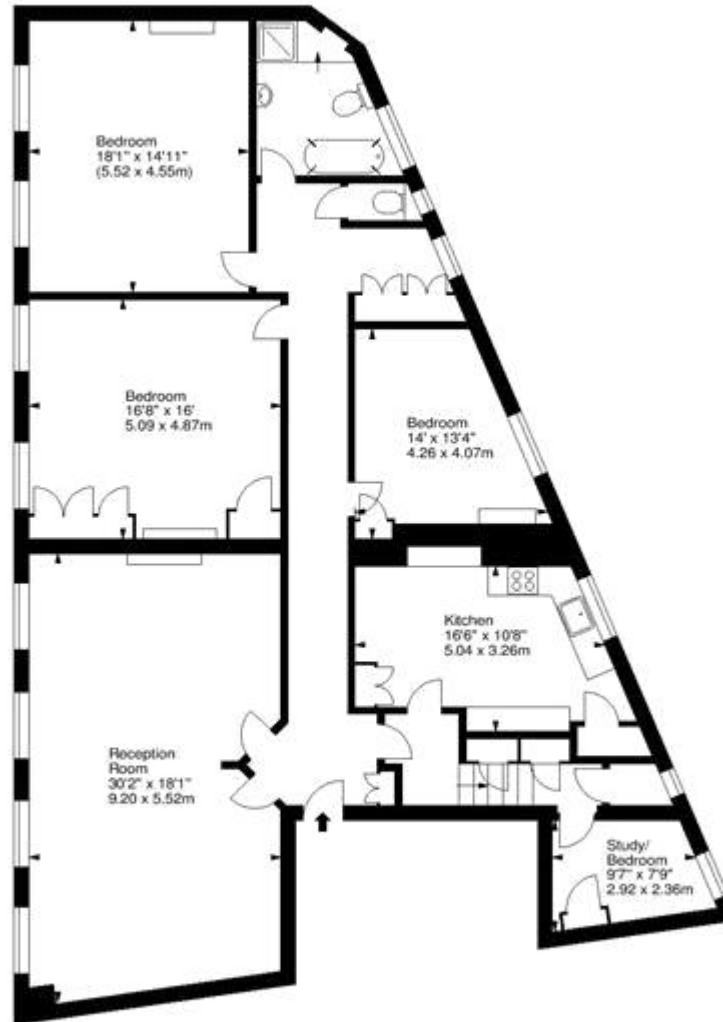
Leasehold (63 years)



# Cromwell Road, SW7



Approx. Gross Internal Area  
1950 Sq Ft - 181.16 Sq M



Second Floor

For illustration purposes only. Not to scale.  
All measurements are taken and shown at floor level.  
[www.igphotography.co.uk](http://www.igphotography.co.uk) © Photography / Floor Plans / Lease Plans / EPCs



MILTON  
STONE



Viewing by appointment only  
Milton Stone - Head Office  
53 Abingdon Road, London W8 6AN  
Tel: 0207 938 2311 Email: [info@miltonstone.com](mailto:info@miltonstone.com) Website: [www.miltonstone.com](http://www.miltonstone.com)