



MILTON
STONE

Hammersmith Terrace

Guide Price £3,900,000 Freehold

Hammersmith Terrace, Chiswick Mall

Description

This beautiful mid 18thC house is situated in a perfect position on historic Hammersmith Terrace with direct access to the Thames which runs past the bottom of the garden. This elegant property has a wealth of generously proportioned reception rooms all of which are filled with light from the large period windows.

Now in need of renovation, the property has not been on the market for almost 100 years. It represents a rare opportunity to create a unique home in a spectacular setting.

Hammersmith Terrace and its continuation Chiswick Mall form the best part of this lovely stretch of the Thames riverbank and are a short walk from Chiswick High Road and Hammersmith Broadway with all their amenities. Within 10 minutes drive from Kensington, the Terrace has easy access to the M4, A3 & North Circular Road with Heathrow 20 minutes to the West.

At just under 3000 square feet, on five floors, the accommodation comprises:

Sitting Room, Study, Drawing Room, Parlour, Dining/Family Room, Kitchen/Breakfast, 6 Bedrooms, 3 Bathrooms, Shower Room, Conservatory, Roof Terrace, 2 Cellars, Garden.

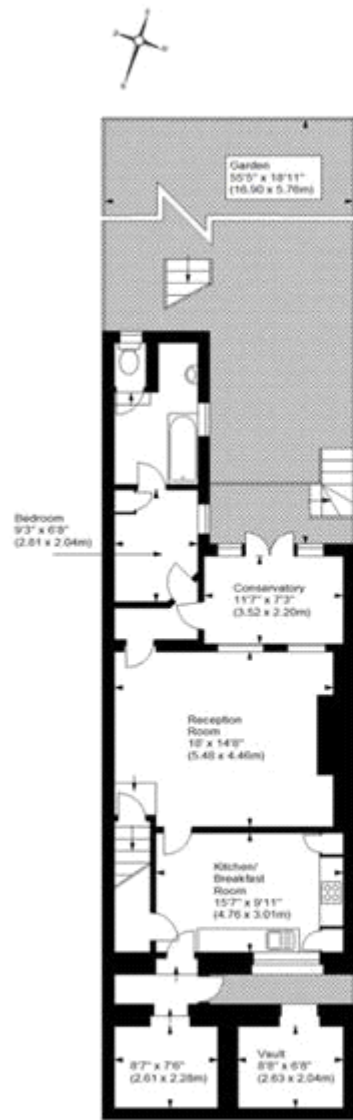
Garage by separate negotiation.



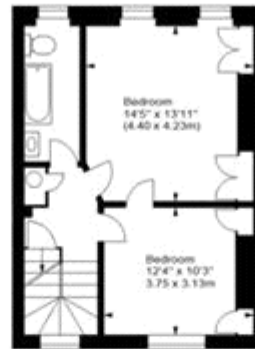
MILTON
STONE

Tenure

Freehold



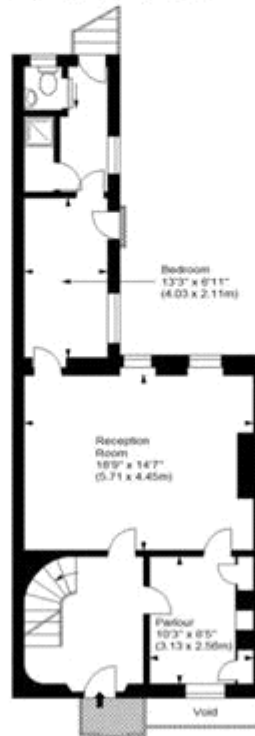
Lower Ground Floor (77.66 sq m)



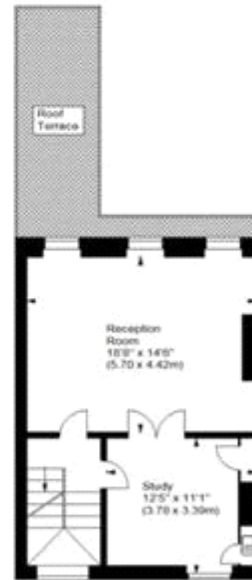
Second Floor (45.09 sq m)



Third Floor (45.71 sq m)



Ground Floor (81.54 sq m)



First Floor (45.36 sq m)

For illustration purposes only. Not to scale.
 All measurements are taken and shown at floor level.
 www.miltonstone.co.uk © Photography: Floor Plans / Lease Plans / EPCs

Hammersmith Terrace, W6
 Approx. Gross Internal Area
 2964 Sq Ft - 275.26 Sq M
 Vault 61 Sq Ft - 5.67 Sq M



Viewing by appointment only
Milton Stone - Head Office
53 Abingdon Road, London W8 6AN
Tel: 0207 938 2311 Email: info@miltonstone.com Website: www.miltonstone.com