



Ashburn Gardens, London, SW7

£2,500,000 Share of Freehold

3 bedroom apartment for sale

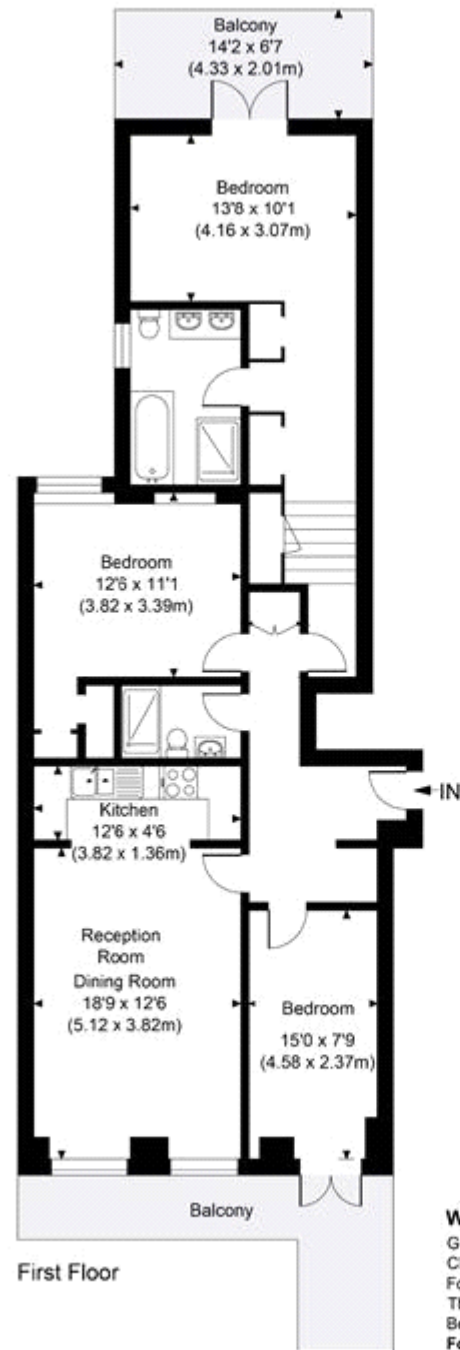
Description

A modern three double bedroom apartment in the heart of South Kensington. The flat benefits from a fabulous 20 ft, high-ceilinged reception room with wooden floors and a balcony, two bathrooms (one en-suite) and a quiet sunny terrace at the rear of the property. Situated in a period stucco fronted building moments from Gloucester Road tube station and within walking distance of South Kensington and Hyde Park.

Tenure

Share of Freehold (98 years)





Wickham Court

Gross Internal Area 1082 sq. ft / 100.48 sq. m

CH = Ceiling Heights

For identification purposes only.

The Position and size of doors, windows, appliances

Bedroom and other features are approximate only.

For illustrative purposes only - not to scale



Energy Efficiency Rating		Environmental Impact (CO ₂) Rating	
Current	Potential	Current	Potential
Very energy efficient - lower running costs (92-100) A		Very environmentally friendly - lower CO ₂ emissions (92-100) A	
(81-91) B		(81-91) B	
(69-80) C		(69-80) C	
(55-68) D		(55-68) D	
(39-54) E		(39-54) E	
(21-38) F		(21-38) F	
(1-20) G		(1-20) G	
Not energy efficient - higher running costs		Not environmentally friendly - higher CO ₂ emissions	
England & Wales EU Directive 2002/91/EC		England & Wales EU Directive 2002/91/EC	
68		80	
		64	

The energy efficiency rating is a measure of the overall efficiency of a home. The higher the rating the more energy efficient the home is and the lower the fuel bills will be.

The environmental impact rating is a measure of a home's impact on the environment in terms of carbon dioxide (CO₂).

Viewing by appointment only
 Milton Stone - Head Office
 53 Abingdon Road, London W8 6AN
 Tel: 0207 938 2311 Email: info@miltonstone.com Website: www.miltonstone.com

