



MILTON
STONE

Alma Square, St John's Wood, NW8

£995,000 Share of Freehold

2 bedroom apartment for sale

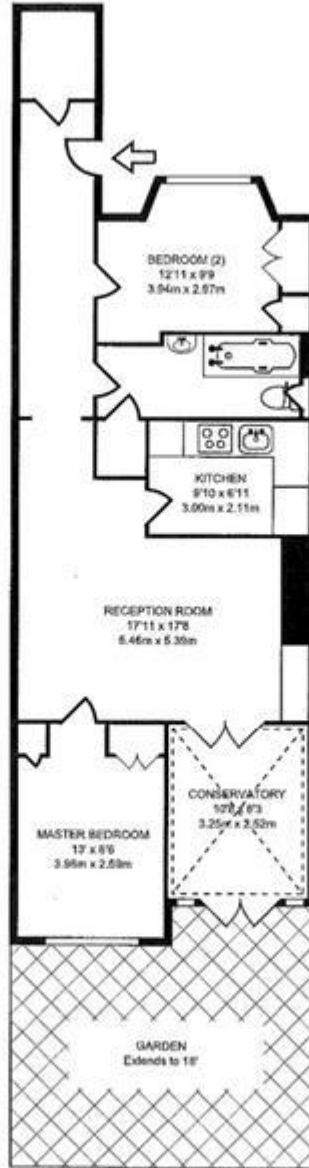
Description

A newly refurbished two bedroom garden apartment benefiting from access to the Alma Square Garden, located walking distance to both Maida Vale and St John's Wood Underground stations as well as the amenities of Nugent Terrace. The apartment is arranged on the garden level and comprises an open plan kitchen/reception room, two double bedrooms with built in wardrobes, bathroom suite, conservatory and a private decked garden.

Tenure

Share of Freehold





GROUND FLOOR

813 SQ FT/75.56 SQ M

Representation of current layout, floor area approx 813 Sq Ft (75 Sq M)

Viewing by appointment only

Milton Stone - Head Office

53 Abingdon Road, London W8 6AN

Tel: 0207 938 2311 Email: info@miltonstone.com Website: www.miltonstone.com

MILTON
STONE 