



MILTON
STONE

Groom Place, SW1X

£4,950,000 Freehold

3 bedroom mews house for sale

Description

This “Turn-Key” three double bedroom Freehold mews house in Groom Place has been the subject of a complete rebuild to exacting standards offering any incoming purchaser a bespoke living experience.

Groom Place is a quiet cobbled mews in Belgravia, located between Chapel Street and Chester Street and within walking distance of Belgrave Square which this mews house has access to.

Glass Entrance Hallway * 22ft Wooden Floored Reception Room with Bar area and Fireplace * First Floor Master Bedroom with Dressing Room and “Waterwork” En-suite Bathroom * Second Floor Two Further Double Bedrooms * Family Bathroom * Guest Cloakroom * Bespoke fitted Kitchen/Dining Room with Wine storage * Pantry/Utility Room * Private Mews Parking * Air conditioning * Water Under Floor Heating* CCTV *EPC Rating C.

Tenure

Freehold



Groom Place, SW1

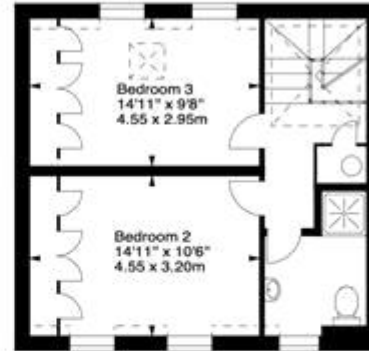


Approx. Gross Internal Area
2002 Sq Ft - 185.99 Sq M

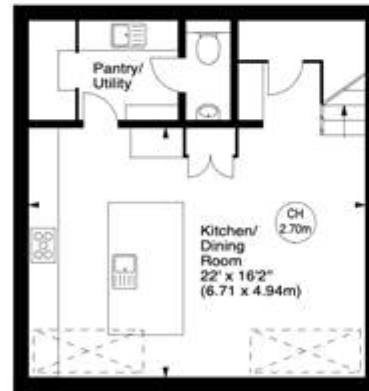
Key :
CH - Ceiling Height



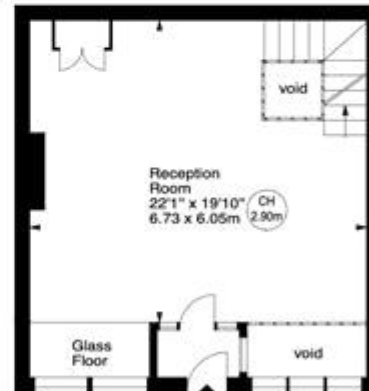
First Floor



Second Floor



Lower Ground Floor



Ground Floor

For illustration purposes only. Not to scale.
All measurements are taken and shown at floor level.
www.r3photography.co.uk © Photography / Floor Plans / Lease Plans / EPCs





Energy Efficiency Rating		Environmental Impact (CO ₂) Rating			
Very energy efficient - lower running costs	Current	Potential	Very environmentally friendly - lower CO ₂ emissions	Current	Potential
(92-100) A			(92-100) A		
(81-91) B			(81-91) B		
(69-80) C			(69-80) C		
(55-68) D			(55-68) D		
(39-54) E			(39-54) E		
(21-38) F			(21-38) F		
(1-20) G			(1-20) G		
<i>Not energy efficient - higher running costs</i>			<i>Not environmentally friendly - higher CO₂ emissions</i>		
England & Wales		EU Directive 2002/91/EC	England & Wales		EU Directive 2002/91/EC
		69			74
		80			62

The energy efficiency rating is a measure of the overall efficiency of a home. The higher the rating the more energy efficient the home is and the lower the fuel bills will be.

The environmental impact rating is a measure of a home's impact on the environment in terms of carbon dioxide (CO₂).

Viewing by appointment only
 Milton Stone - Head Office
 53 Abingdon Road, London W8 6AN
 Tel: 0207 938 2311 Email: info@miltonstone.com Website: www.miltonstone.com

