



South Terrace, SW7

£6,300,000 Freehold

5 bedroom terraced house for sale

Description

A spacious and elegant family townhouse in this highly sought-after location in South Kensington. Arranged over six floors this charming property also has access to Thurloe Square Gardens which is both child and dog friendly.

South Terrace is quietly located adjacent to the boutiques and restaurants of Brompton Cross and is a few minutes' walk from all the amenities and transport links of South Kensington and Knightsbridge.

Accommodation:

Double Drawing Room: Dining Room: Study: Kitchen/Breakfast Room: 5 Bedrooms: 5 Bathrooms (2 En-Suite): Self-Contained Studio Room: Utility Room: Patio Garden: Terrace: Balcony: Wine Cellar, Vaults

Description:

Ground Floor:

Hall: Dining Room: Study: Kitchen/Breakfast Room: Terrace: Patio Garden: Visitors' WC

First Floor:

Double Drawing Room with balcony



MILTON
STONE

Second Floor:
Master Bedroom with En-Suite Bathroom

Third Floor:
2 Double Bedrooms with Jack & Jill Bathroom: Family Bathroom on landing

Fourth Floor:

Self-contained flat comprising: Double Bedroom; Sitting Room/Kitchen; Bathroom

Lower Ground Floor:

Self-contained studio flat with independent access to South Terrace; Utility Room; Wine Cellar; Vaults

Tenure

Freehold



Ground Floor
Gross internal area (approx.)
84 Sq m (907 Sq ft)

South Terrace, SW7
Gross internal area (approx.)
362 Sq m (3895 Sq ft) Including Under 1.5m and Vaults
346 Sq m (3719 Sq ft) Excluding Under 1.5m and Vaults
For identification only, Not to Scale

Floor Plan by **capitalgroup** 020 8611 7722



First Floor
Gross internal area (approx.)
49 Sq m (532 Sq ft)



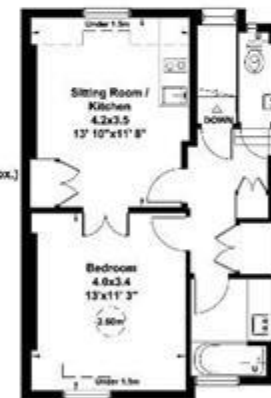
Second Floor
Gross internal area (approx.)
59 Sq m (641 Sq ft)



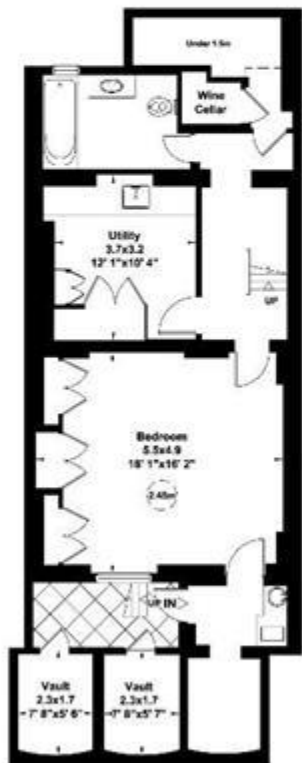
Third Floor
Gross internal area (approx.)
60 Sq m (658 Sq ft)



Half Landing
Gross internal area (approx.)
4 Sq m (48 Sq ft)



Fourth Floor
Gross internal area (approx.)
44 Sq m (470 Sq ft) Including Under 1.5m
Gross internal area (approx.)
40 Sq m (428 Sq ft) Excluding Under 1.5m



Lower Ground Floor
Gross internal area (approx.)
72 Sq m (774 Sq ft) Including Under 1.5m
Gross internal area (approx.)
68 Sq m (729 Sq ft) Excluding Under 1.5m
Vault
Gross internal area (approx.)
8 Sq m (88 Sq ft)

